

Figure C65	Camden Lakeside Compensatory Planting Areas.....	159
Figure C66	Camden Lakeside Indicative Layout and Noise Attenuation Measures.....	164
Figure C67	Camden Lakeside Asset Protection Zones .....	166
Figure C68	ECB/Gledswood Structure Plan .....	169
Figure C69	ECB/Gledswood ILP.....	171
Figure C70	Precinct Identification .....	173
Figure C71	Road Hierarchy Diagram.....	175
Figure C72	Bus Route Plan .....	177
Figure C73	Pedestrian/Cycleway Routes.....	179
Figure C74	Riparian Corridors .....	183
Figure C75	– Indicative locations of vegetation removal, retention, and re-creation. (Source:ECB/Gledswood VMS 20 June 2011).....	187
Figure C76	Water Management Strategy for Precincts 2, 4, 5 and 6 .....	189
Figure C77	Water Management Strategy for Precincts 1, 2 and 3.....	190
Figure C78	Water Management Strategy for Precincts 4 and 5.....	190
Figure C79	Corner Splay Diagram.....	195
Figure C80	Cross Section through Gledswood Access Road.....	197
Figure C81	Principle north south axis along the valley and secondary axes along the ridgelines providing view corridors and view cone .....	199
Figure C82	Indicative Master Plan.....	204
Figure C83	Locations of Smaller Lot Housing Near Areas of High Amenity .....	206
Figure C84	Emerald Hills Road Hierarchy and Bus Route .....	208
Figure C85	Emerald Hills Pedestrian and Cycle Paths.....	209
Figure C86	Emerald Hills Typical Access Street.....	210
<b>Figure C86A</b>	<b>Emerald Hills Typical Access Street Parallel to Camden Valley Way .....</b>	<b>210</b>
Figure C87	Emerald Hills Typical Local Road .....	210
Figure C88	Emerald Hills Typical Collector Road.....	210
Figure C89	Emerald Hills Typical Collector Road with Median.....	211
Figure C90	Emerald Hills Typical Collector Road with Median and Bus Set down .....	211
Figure C91	Emerald Hills Typical Entry / Exit Collector Road.....	211
Figure C92	Local Open Space .....	213
Figure C93	Environmental Conservation Area .....	215
Figure C94	School and Communities Facilities Precinct .....	216
Figure C95	Indicative Bushfire Asset Protection Zones.....	219
Figure C96	Scenic Character Protection Area.....	221

**Insert**



**Part C – Tables**

Table C1	Street Trees in Catherine Field.....	6
Table C2	Manooka Valley Road Type and Width.....	78
Table C3	Harrington Grove Precinct M Protected Trees.....	127

**SUPERSEDED**

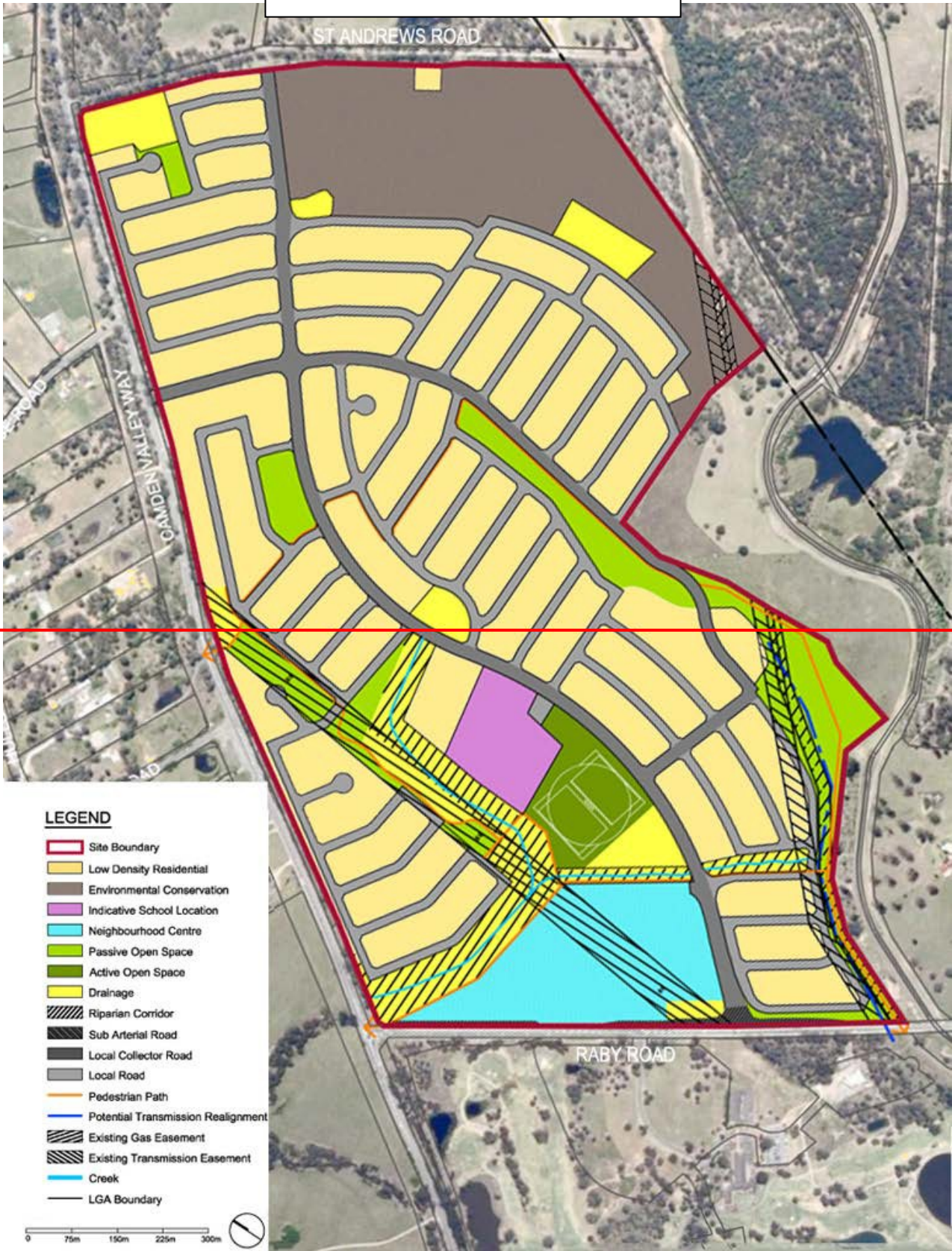


Figure C82 Indicative Master Plan



Figure C82 Indicative Master Plan

**SUPERSEDED**

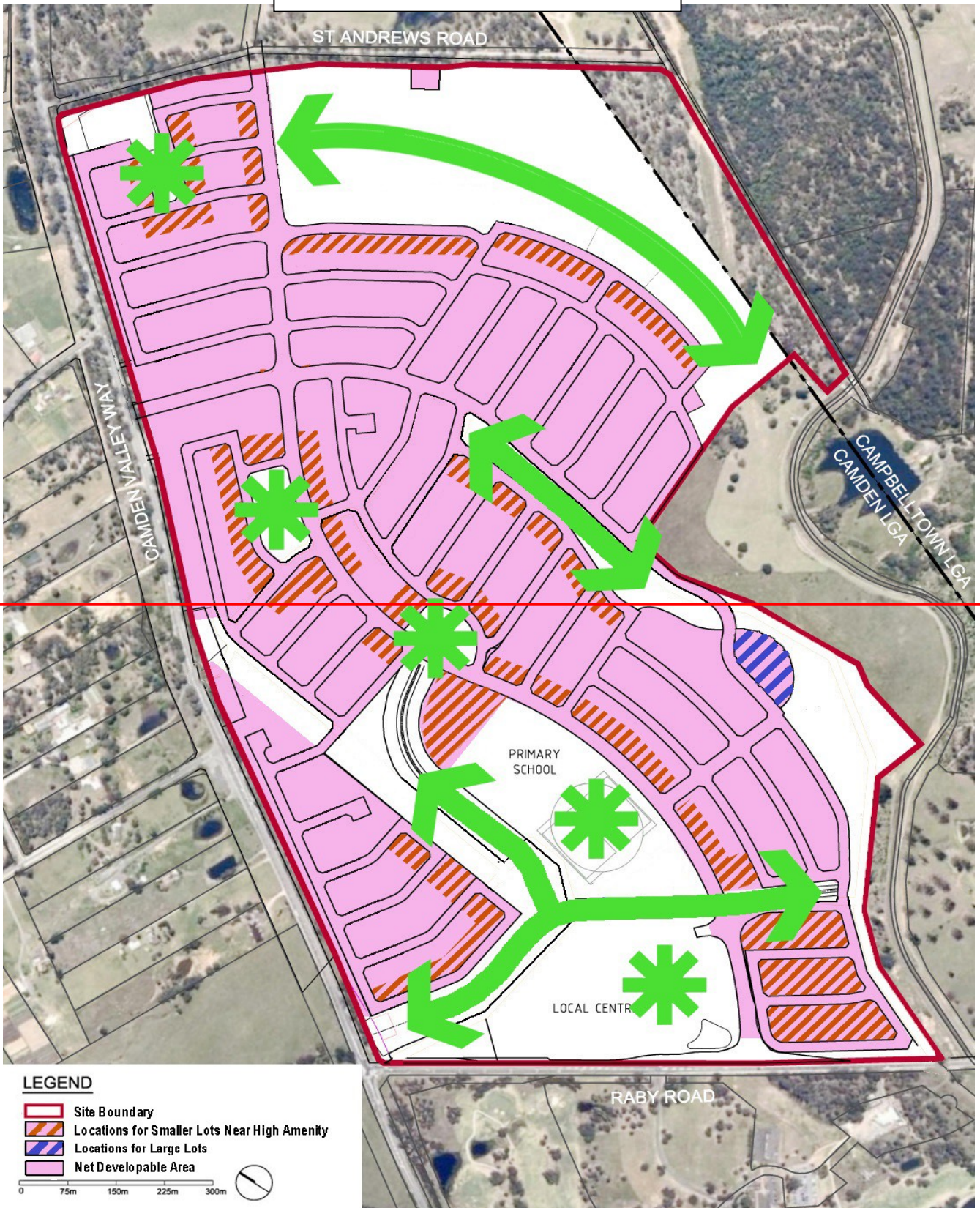


Figure C83 Locations of Smaller Lot Housing Near Areas of High Amenity

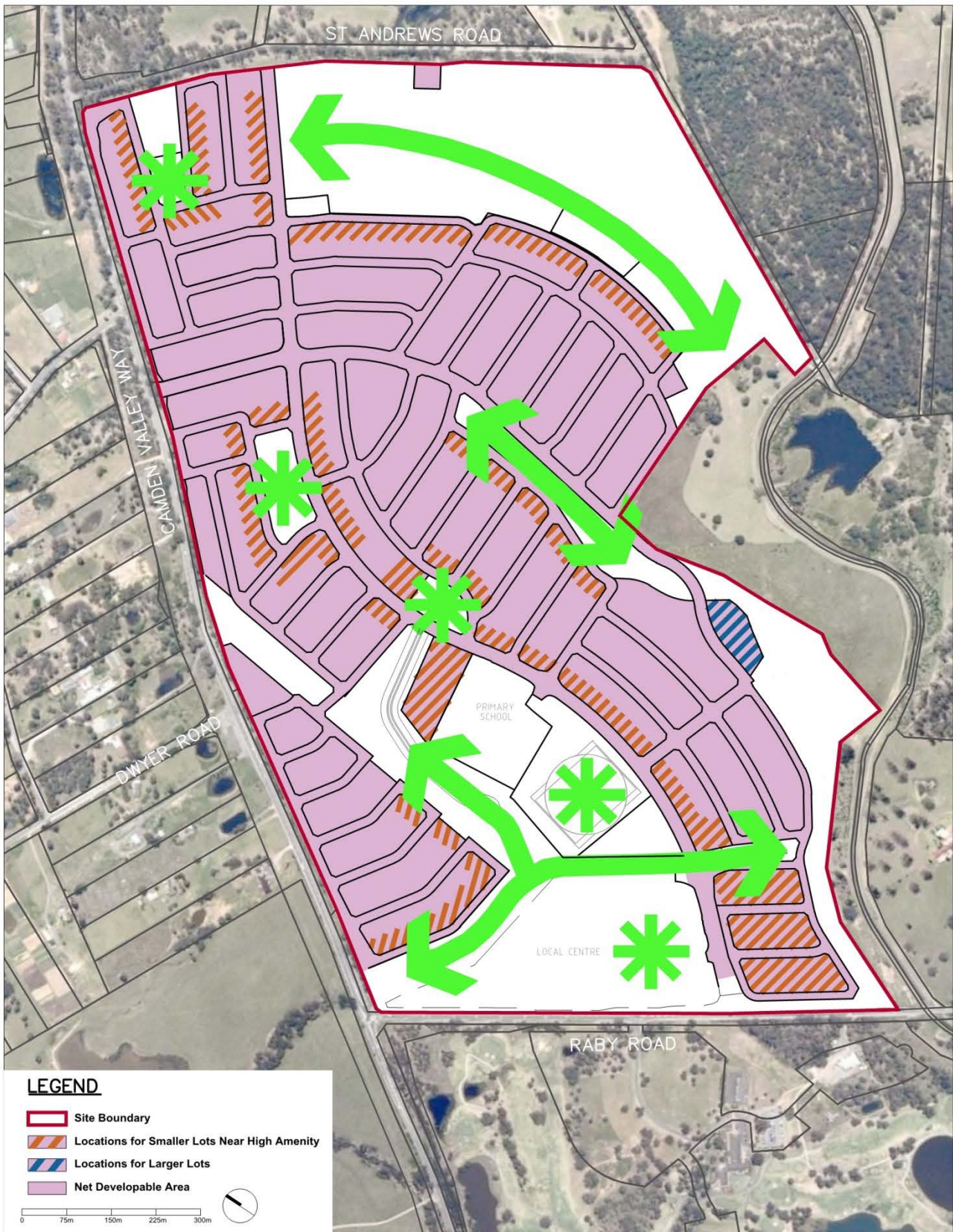


Figure C83 Locations of Smaller Lot Housing Near Areas of High Amenity

**SUPERSEDED**

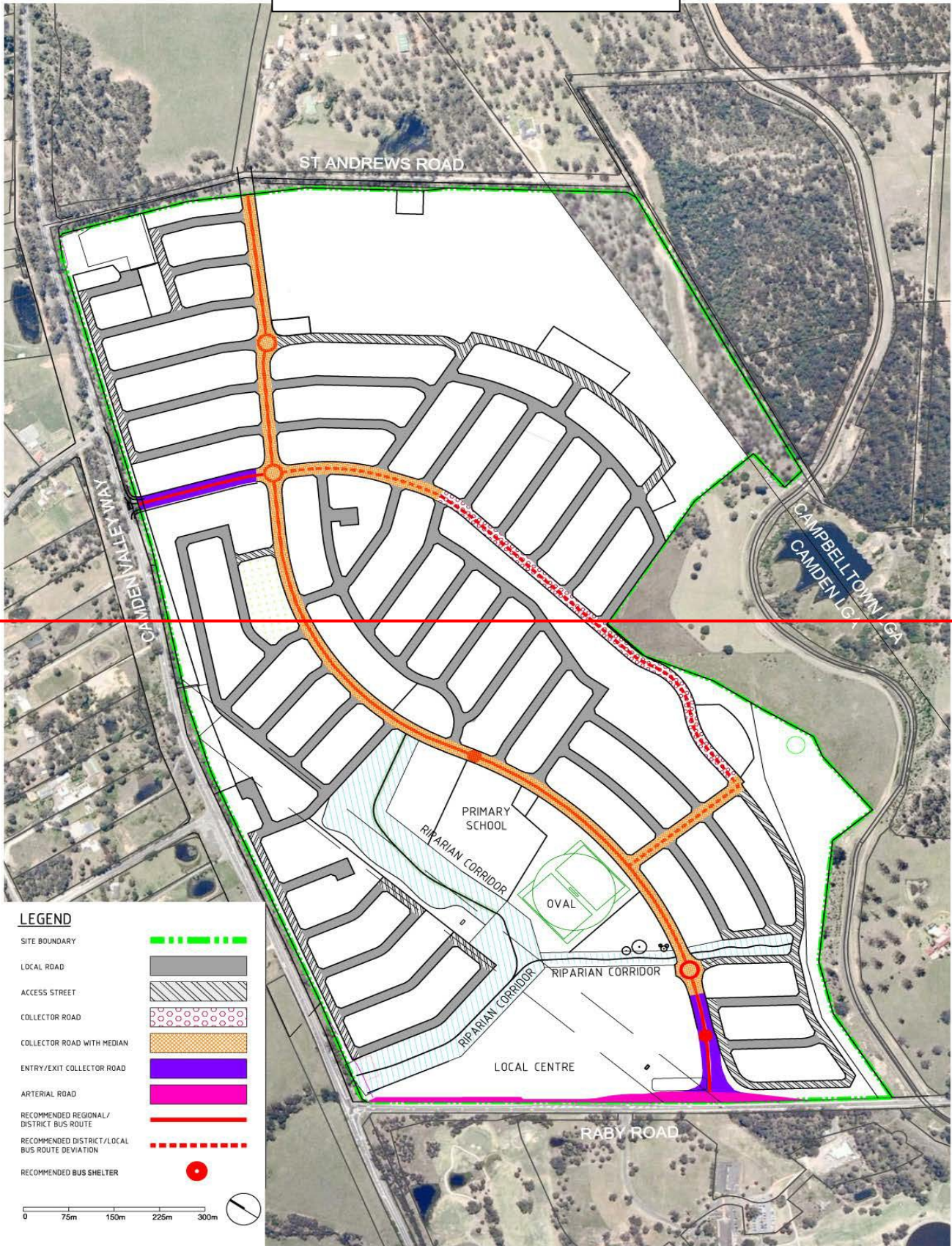


Figure C84 Emerald Hills Road Hierarchy and Bus Route



Figure C84 Emerald Hills Road Hierarchy and Bus Route

**SUPERSEDED**

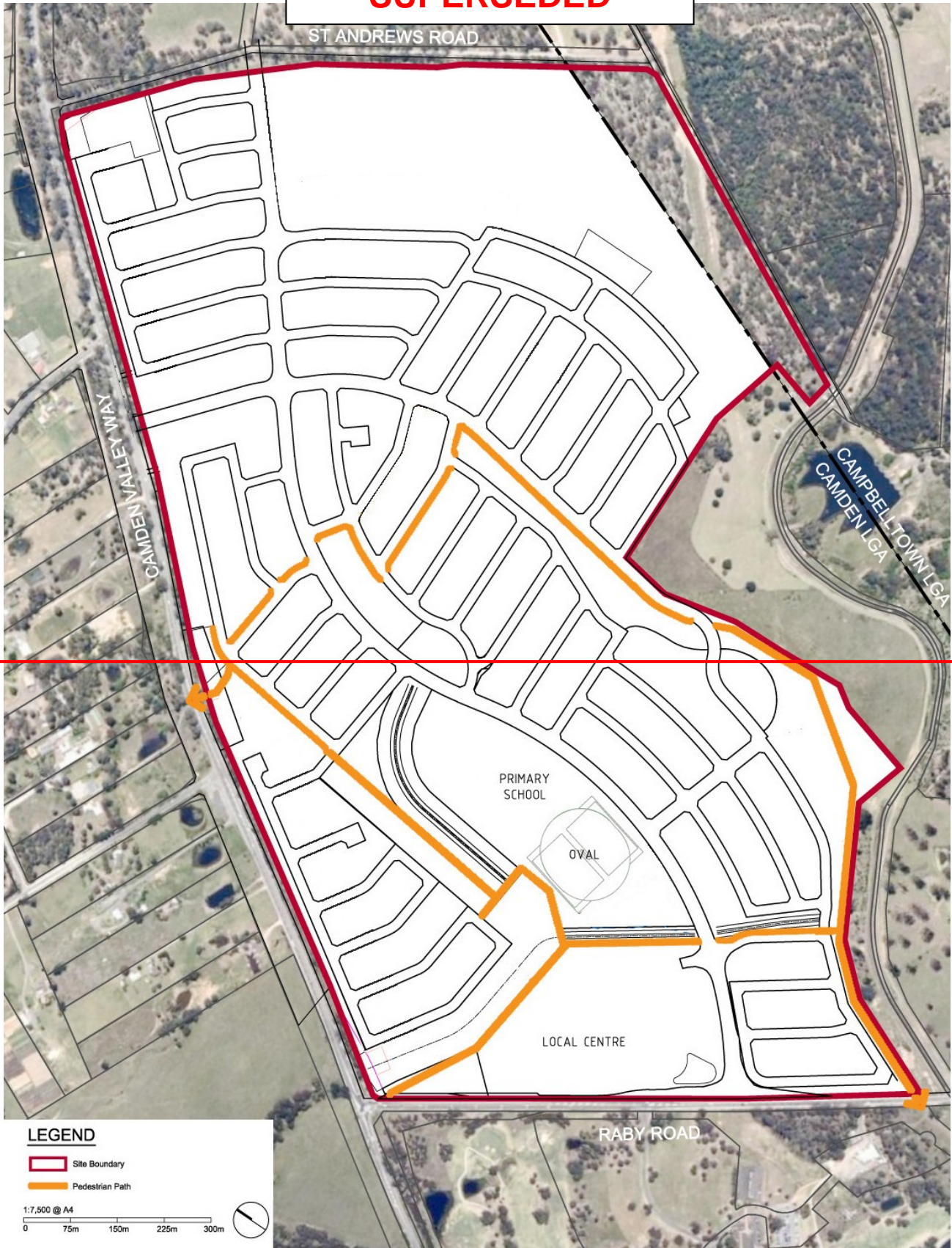


Figure C85 Emerald Hills Pedestrian and Cycle Paths



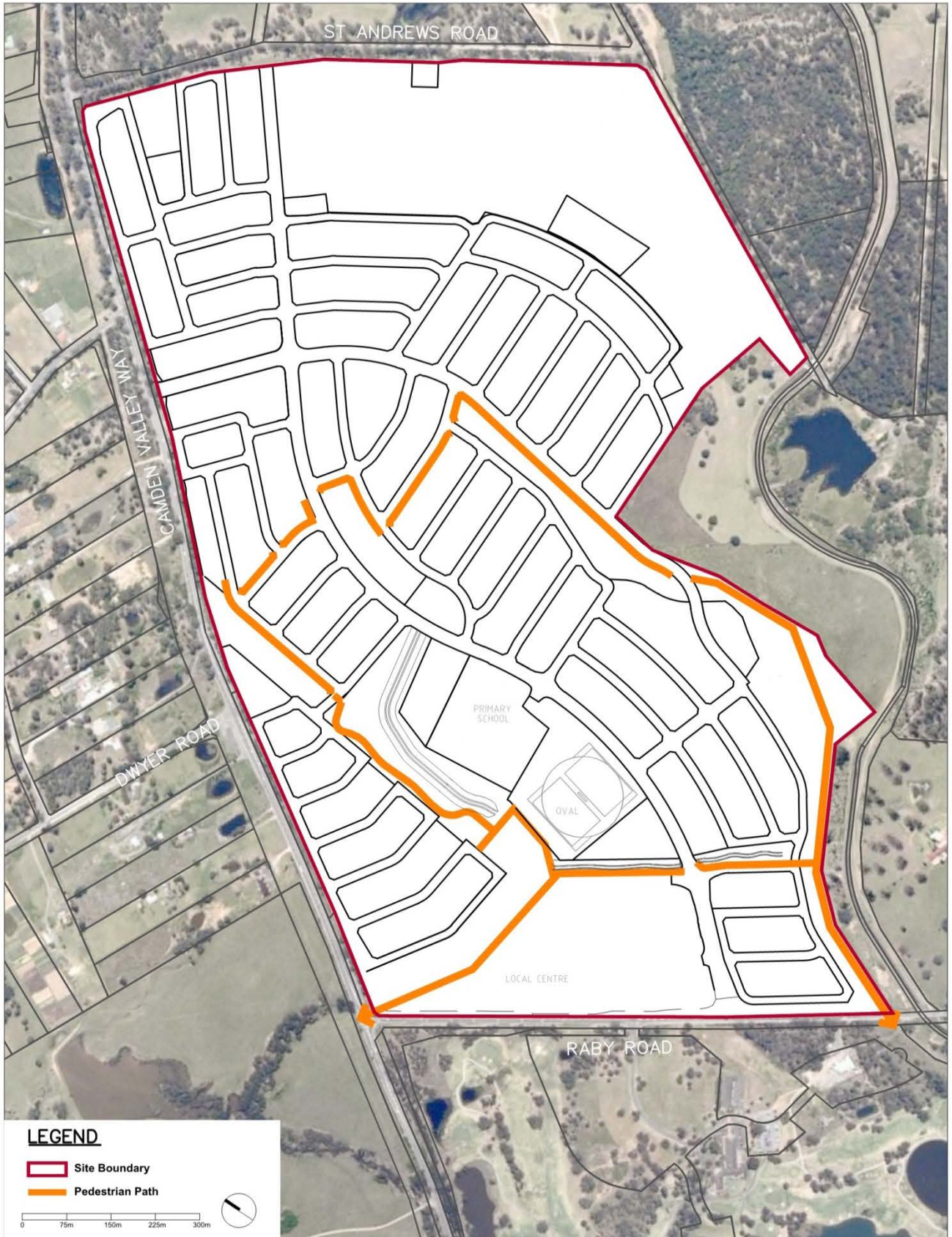


Figure C85 Emerald Hills Pedestrian and Cycle Paths

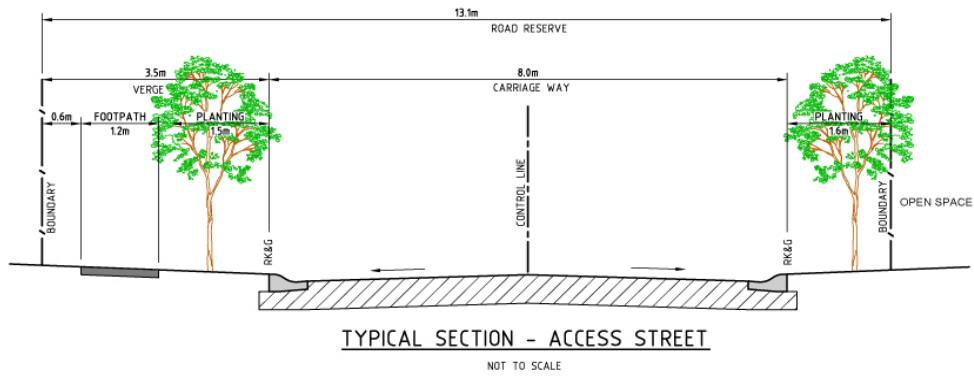


Figure C86 Emerald Hills Typical Access Street

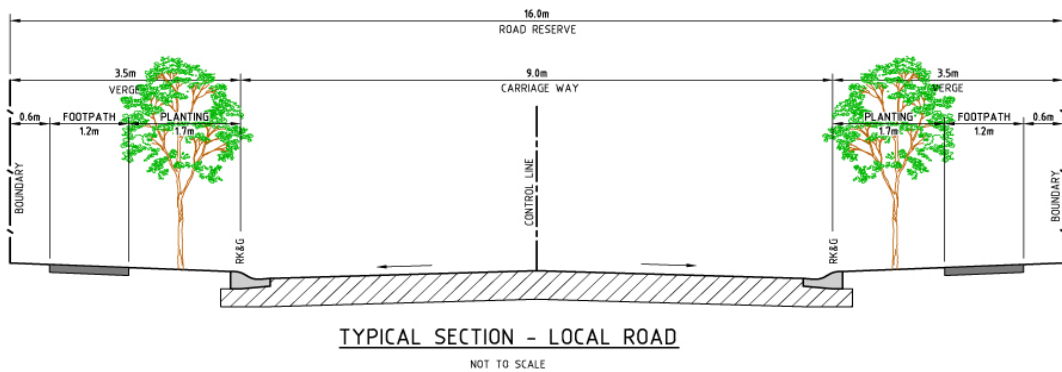


Figure C87 Emerald Hills Typical Local Road

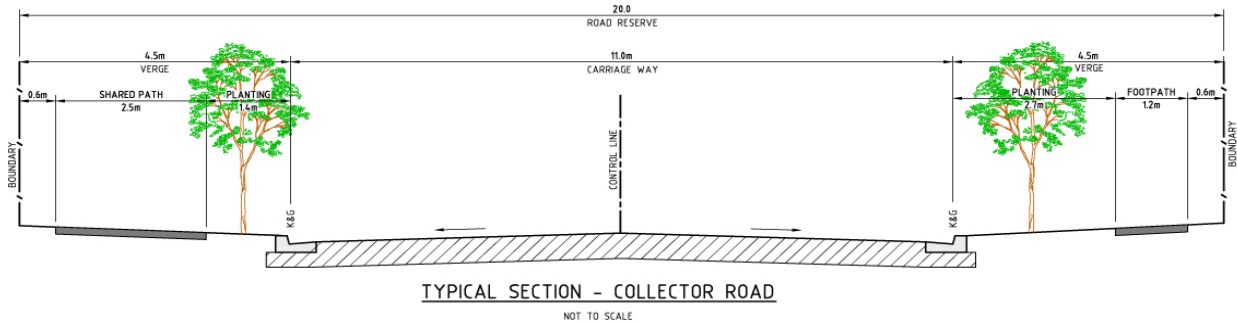
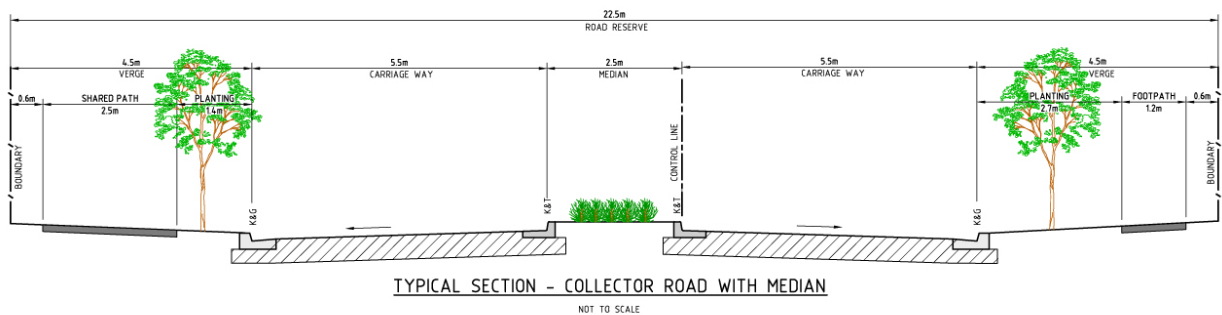
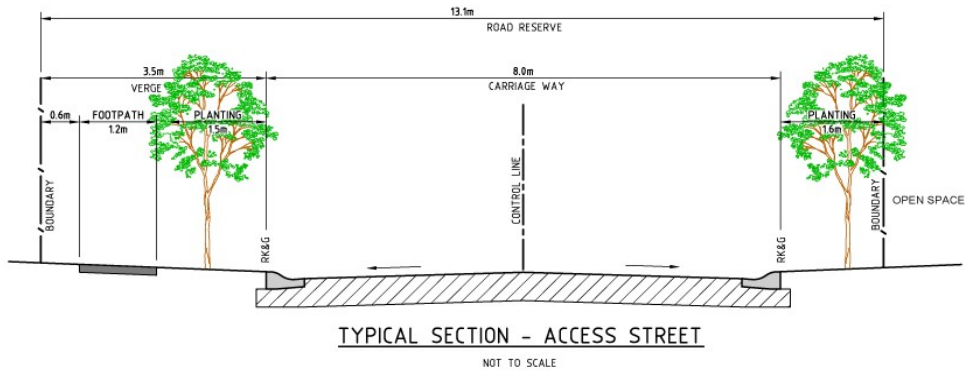
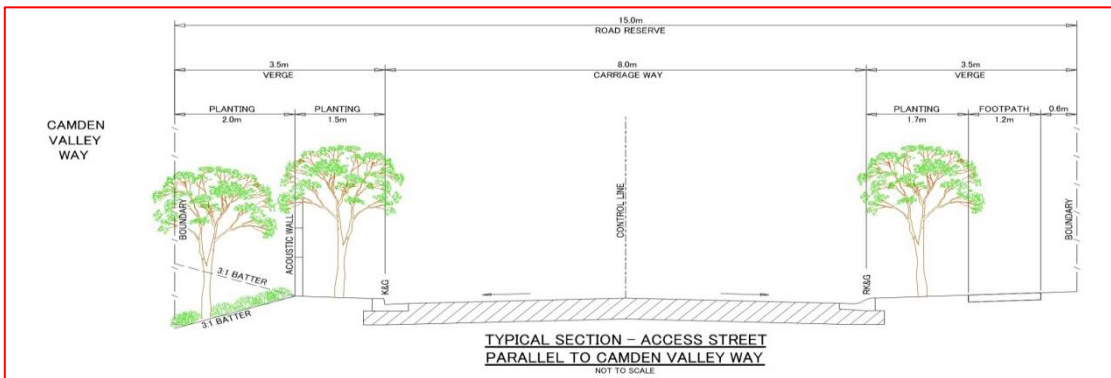


Figure C88 Emerald Hills Typical Collector Road

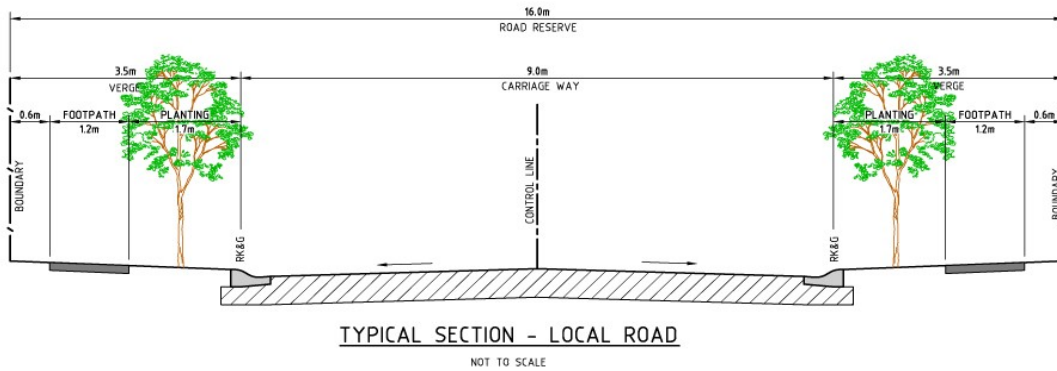




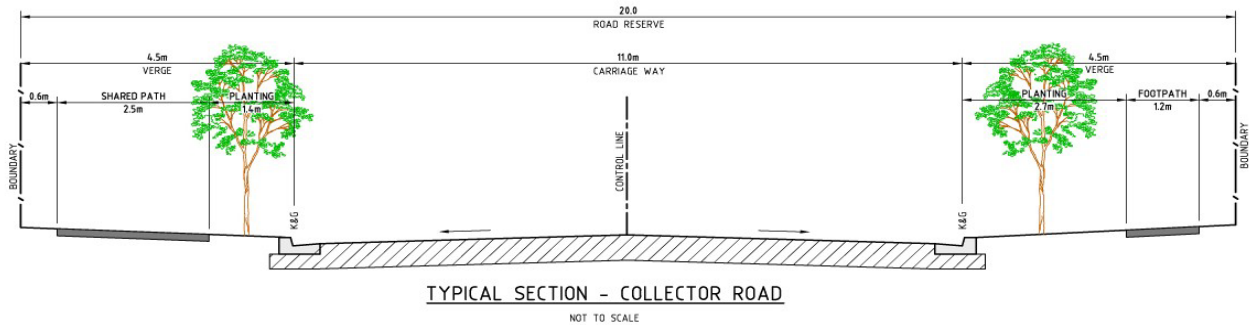
**Figure C86 Emerald Hills Typical Access Street**



**Figure C86A Emerald Hills Typical Access Street Parallel to Camden Valley Way**



**Figure C87 Emerald Hills Typical Local Road**



**Figure C88 Emerald Hills Typical Collector Road**

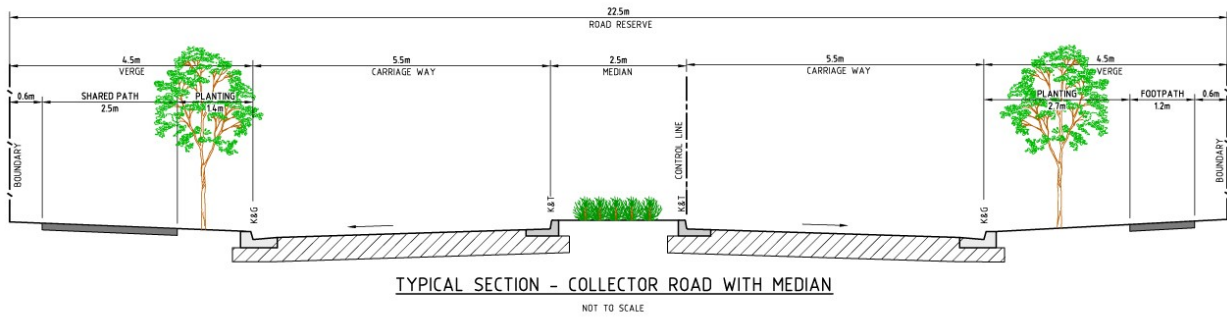


Figure C89 Emerald Hills Typical Collector Road with Median

**SUPERSEDED**



Figure C92 Local Open Space



Figure C92 Local Open Space

**SUPERSEDED**



Figure C93 Environmental Conservation Area



Figure C93 Environmental Conservation Area



**SUPERSEDED****C13.7 School and Communities Facilities Precinct****Objectives**

1. Control the interface between the school, sports oval and adjacent land uses.
2. Establish an appropriate physical separation between facilities, roads, dwellings and other activities within adjacent land areas.
3. Define the extent of the landscape curtilage which surrounds the school.
4. Facilitate the appropriate physical separation between the recreational facilities and surrounding activities.
5. Establish site circulation, visual amenity and environmental management principles which apply to the School and Community Facilities Precinct.
6. Facilitate pedestrian and bicycle access to the Precinct.

**Controls**

1. Development will generally be located in accordance with the principles in Figure C94.
2. A multi-purpose community room of approximately 170m<sup>2</sup> floor space is to be provided within the amenities building of approximately 360m<sup>2</sup> which is attached to the recreation oval.

**Figure C94 School and Communities Facilities Precinct**

## C13.7 School and Communities Facilities Precinct

### Objectives

1. Control the interface between the school, sports oval and adjacent land uses.
2. Establish an appropriate physical separation between facilities, roads, dwellings and other activities within adjacent land areas.
3. Define the extent of the landscape curtilage which surrounds the school.
4. Facilitate the appropriate physical separation between the recreational facilities and surrounding activities.
5. Establish site circulation, visual amenity and environmental management principles which apply to the School and Community Facilities Precinct.
6. Facilitate pedestrian and bicycle access to the Precinct.

### Controls

1. Development will generally be located in accordance with the principles in Figure C94.
2. A multi-purpose community room of approximately 170m<sup>2</sup> floor space is to be provided within the amenities building of approximately 360m<sup>2</sup> which is attached to the recreation oval.

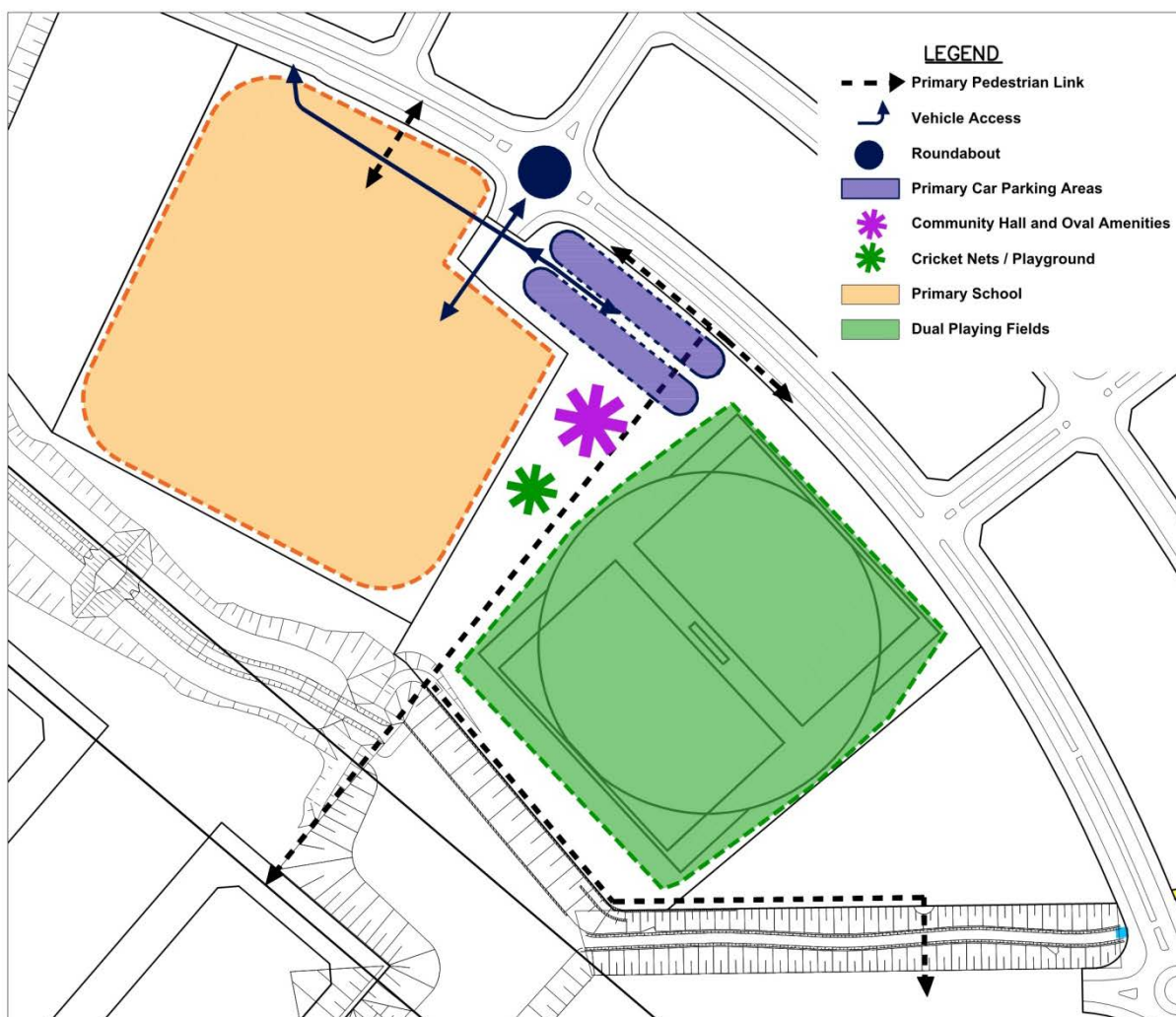
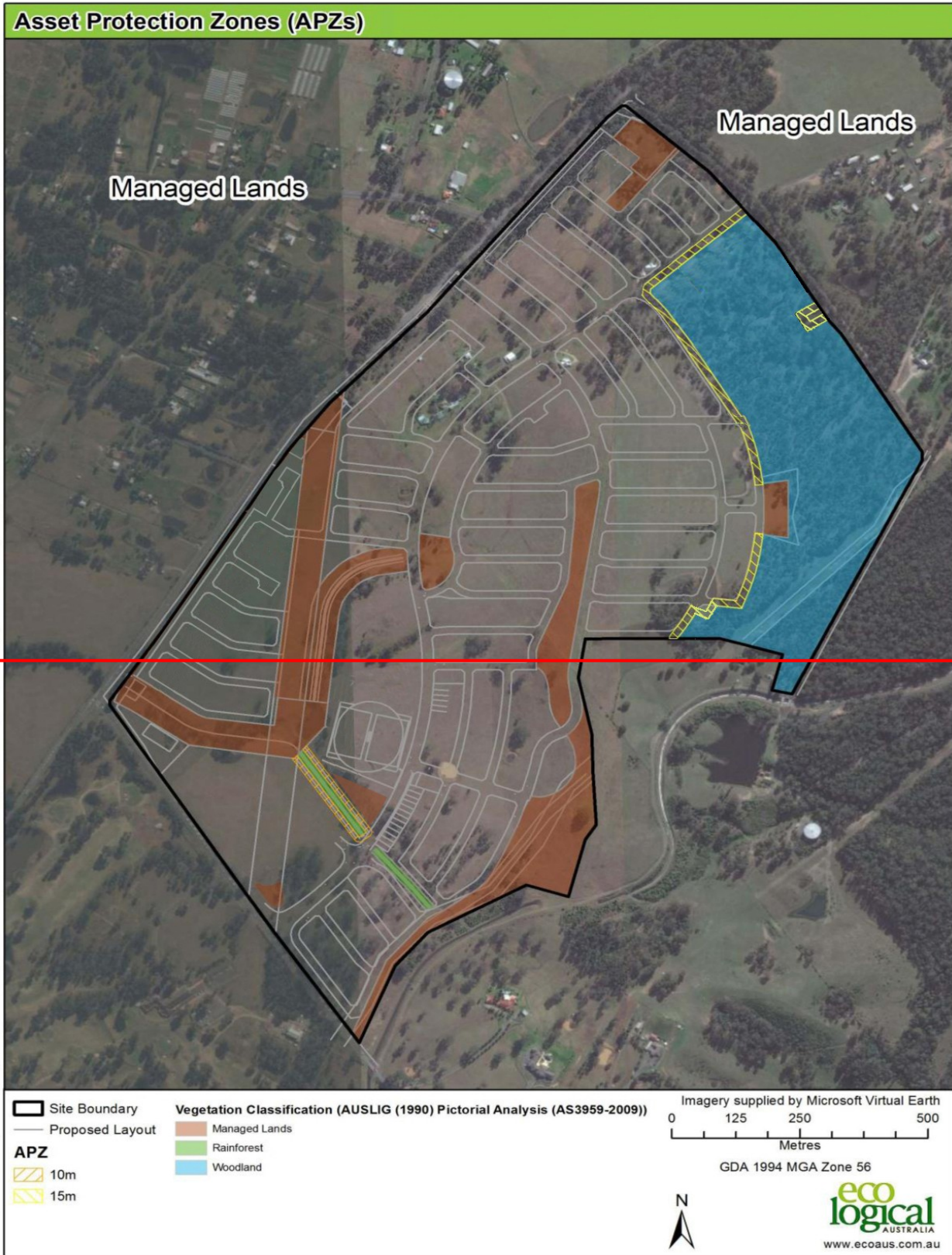


Figure C94 School and Communities Facilities Precinct

SUPERSEDED



**Figure C95    Indicative Bushfire Asset Protection Zones**

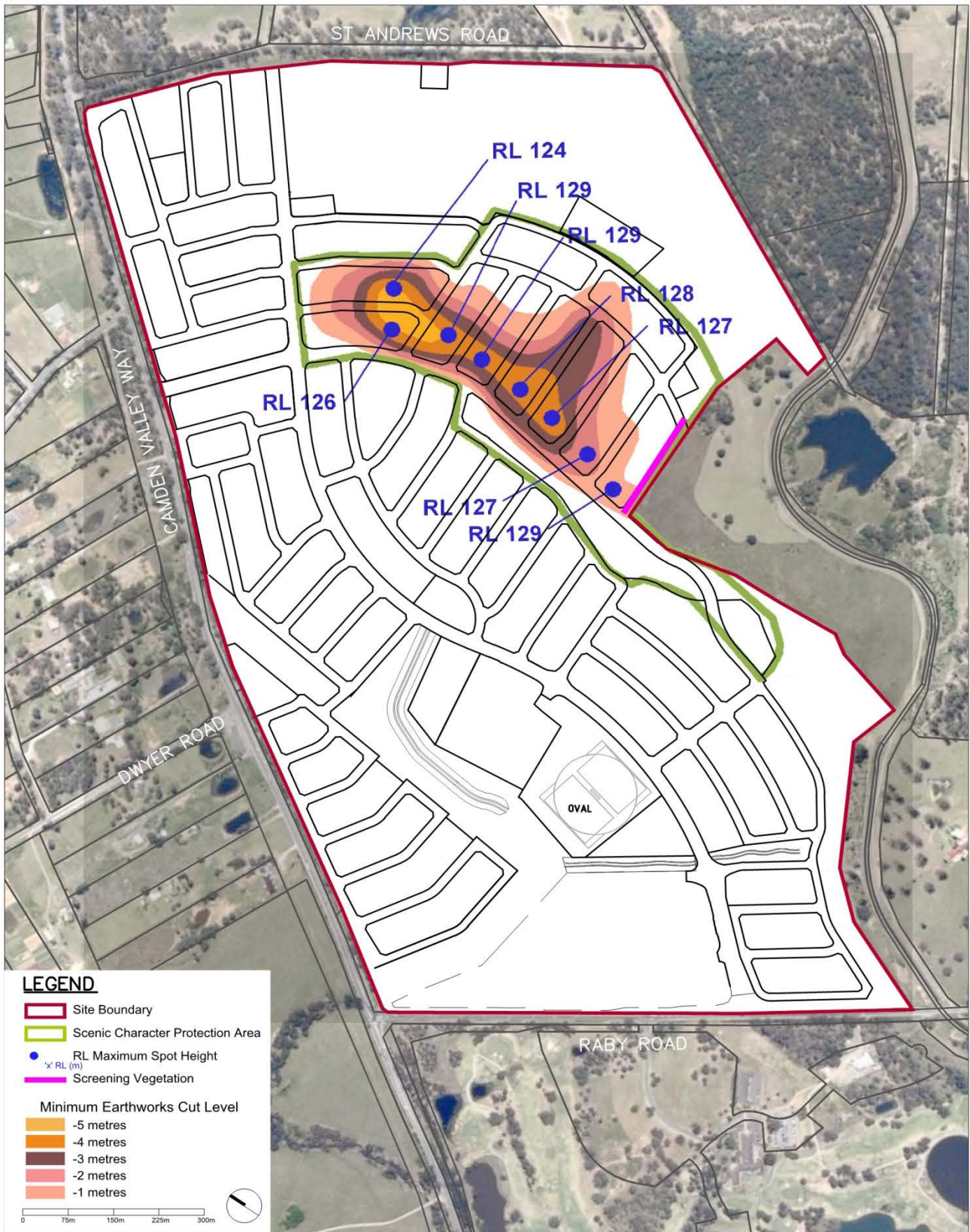


Figure C95 Indicative Bushfire Asset Protection Zones

**SUPERSEDED**



Figure C96 Scenic Character Protection Area



**Figure C96 Scenic Character Protection Area**