



Portable Drinking Fountain and Portable Bottle Refill Station

Instruction Guide

Index

Portable Drinking Fountain Information	Page 3
Portable Bottle Refill Station Information	Page 4
Equipment List	Page 5
Instruction Guide	Page 6
Read This Before Setting Up	
Cleaning & Maintenance	
Single Unit Set Up	Page 7
Multiple Unit Set Up	Page 8
Pack Down	Page 9

Portable Drinking Fountain Information

Meet Pat Portable Drinking Fountain

Model: MP-PDF-02

Dimensions: 850H x 470W x 500D

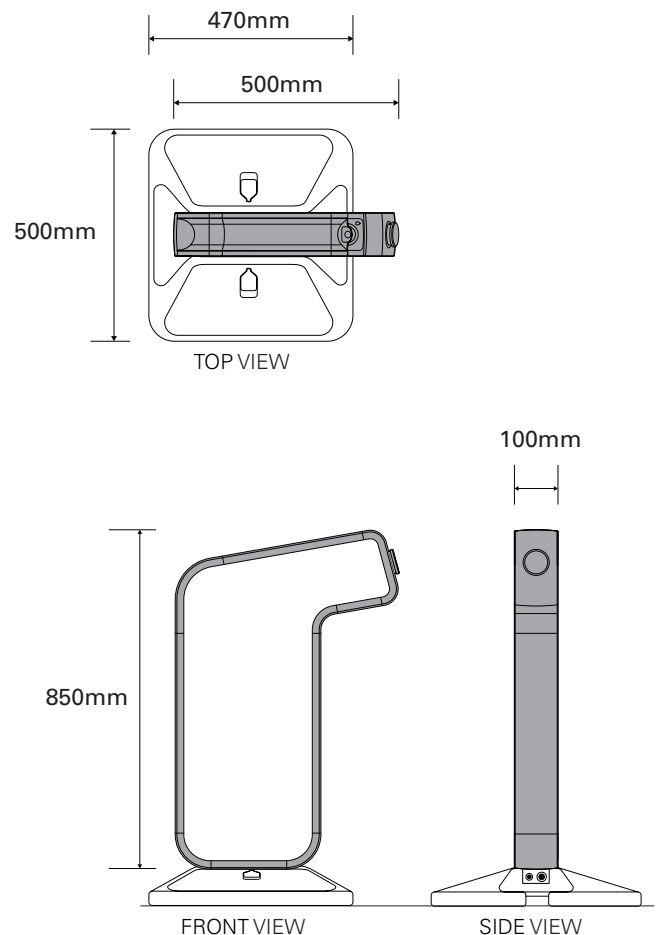
Weight: 18kgs

Water Supply Connection: 1/2 or 3/4"

Water Hosing: 10mm x 10m

Drainage Hosing: 12mm x 4m

Packed size: 136cm length x 50cm width x 23cm height



Portable Bottle Refill Station

Meet Pat Portable Bottle Refill Station

Model: MP-P-02

Dimensions: 1300H x 470W x 500D

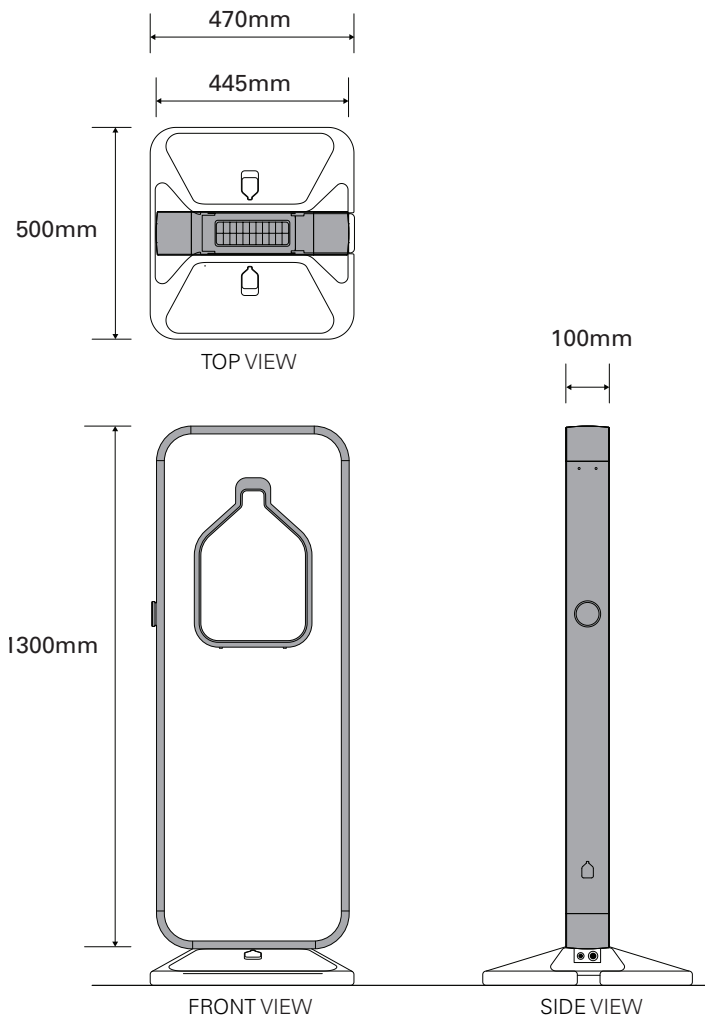
Weight: 23kgs

Water Supply Connection: 1/2 or 3/4"

Water Hosing: 12mm x 10m

Drainage Hosing: 12mm x 4m

Packed size: 136cm length x 50cm width x 23cm height



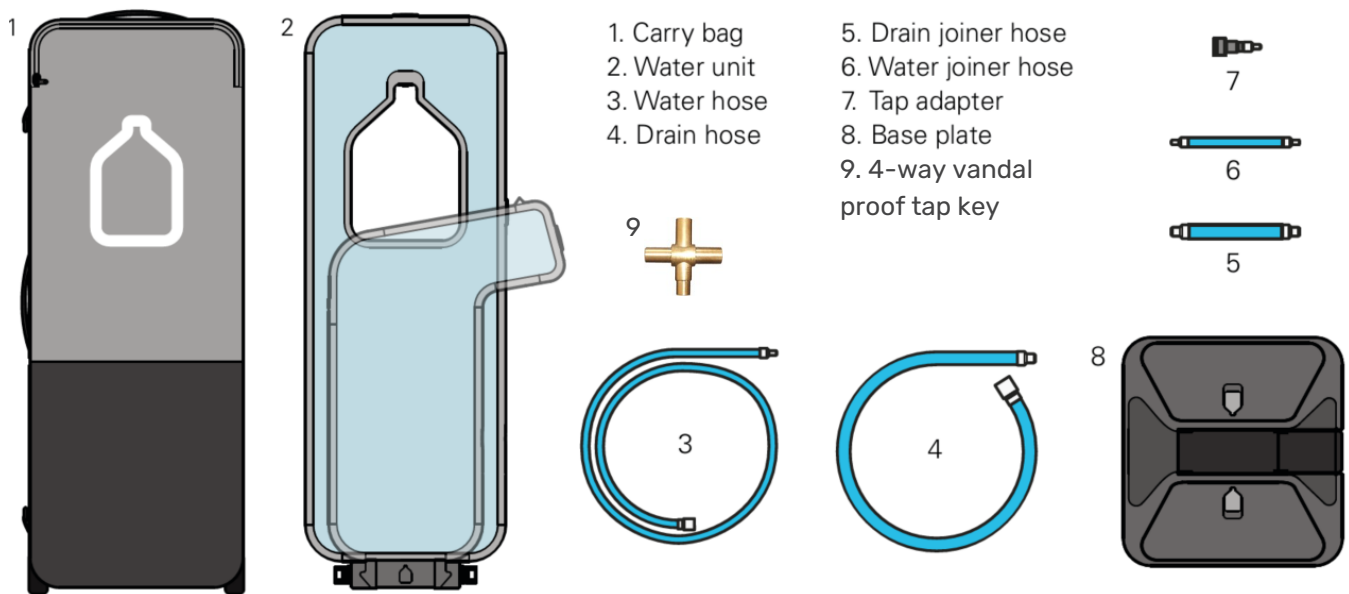
Equipment List

Each portable water unit will have one of each of the following parts:

1. Carry bag
2. Water unit
3. Water hose
4. Drain hose
5. Drain joiner hose
6. Water joiner hose
7. Tap adapter (2 fittings to fit both tap spouts)
8. Base plate
9. 4-way vandal proof tap key

Additional Equipment:

- Extension water hose (approx. 30m - 1 available)
- Trip hazard hose covers (3 available)
- Promotional teardrop banner (1 available)



Instruction Guide

Read This Before Setting Up

We ask that you exercise a degree of care when using any portable water unit, follow the terms and conditions of hire and adhere to a common sense approach.

- Do not set the units up near live exposed electrical connections or wiring;
- Do not set up in high wind areas; and
- If the hoses pass over traffic areas, use approved trip hazard hose covers.

Cleaning & Maintenance

It is very important to keep the portable water units in the best possible condition. Keep the units clean and stored in a dry cool place.

Before use: Check all hoses, connections and nozzles for dirt, grime, mould or other contaminants.

After Use: Drain all water from the units and hoses. Wipe down all surfaces with a soft wet cloth and check for damage.

Single Unit Set Up

SET UP - Single Bottle Refill or Drinking Fountain

1



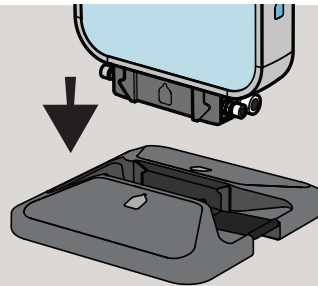
Check tap for pressure and clean water.

2



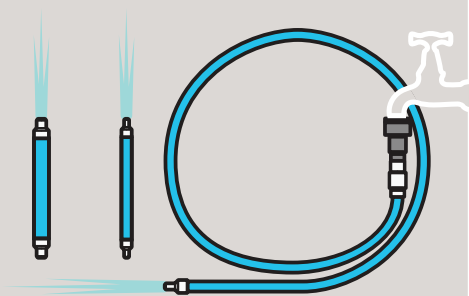
Connect the tap adapter and drinking hose.

3



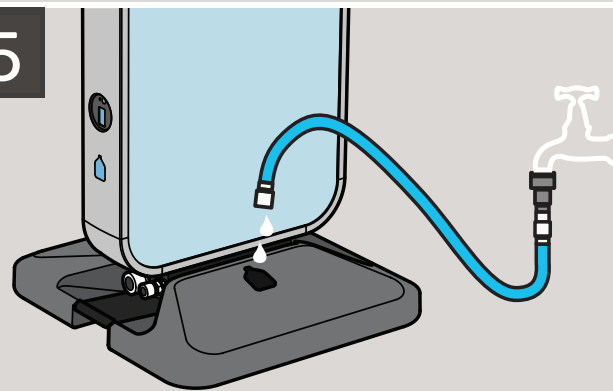
Choose suitable location and position the base. Lower the unit in to the base so it clips in place.

4



Flush all the hoses with clean water prior to connecting to the unit. As a guide 10sec per 10m hose. If the hoses appear dirty do not use.

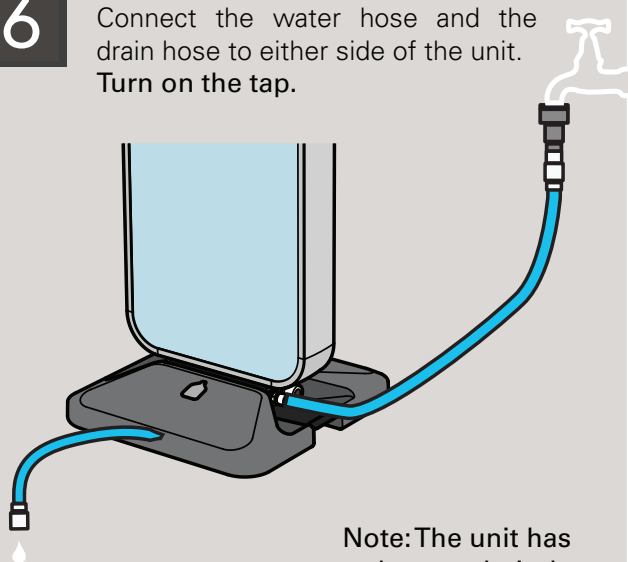
5



Option: If needed you can fill the base with water for more stability.

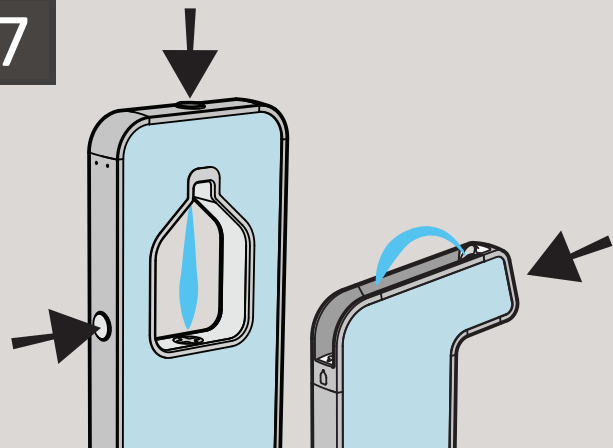
6

Connect the water hose and the drain hose to either side of the unit. Turn on the tap.



Note: The unit has to have a drain hose connected to drain.

7



Press all the buttons to flush out any air bubbles and old water in the lines. Run all the taps for 10 seconds. **Check for leaks.** If a leak is found turn off the water and check connections.

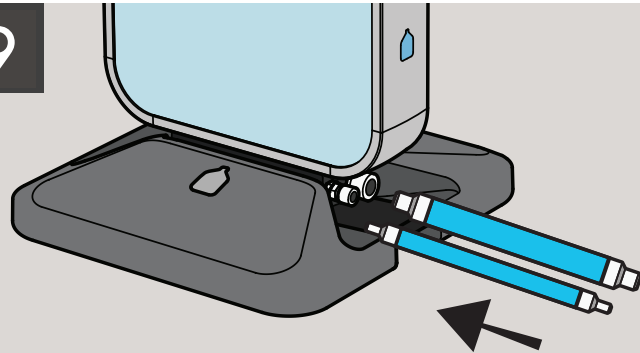
Multiple Unit Set Up

SET UP - Multiple Units

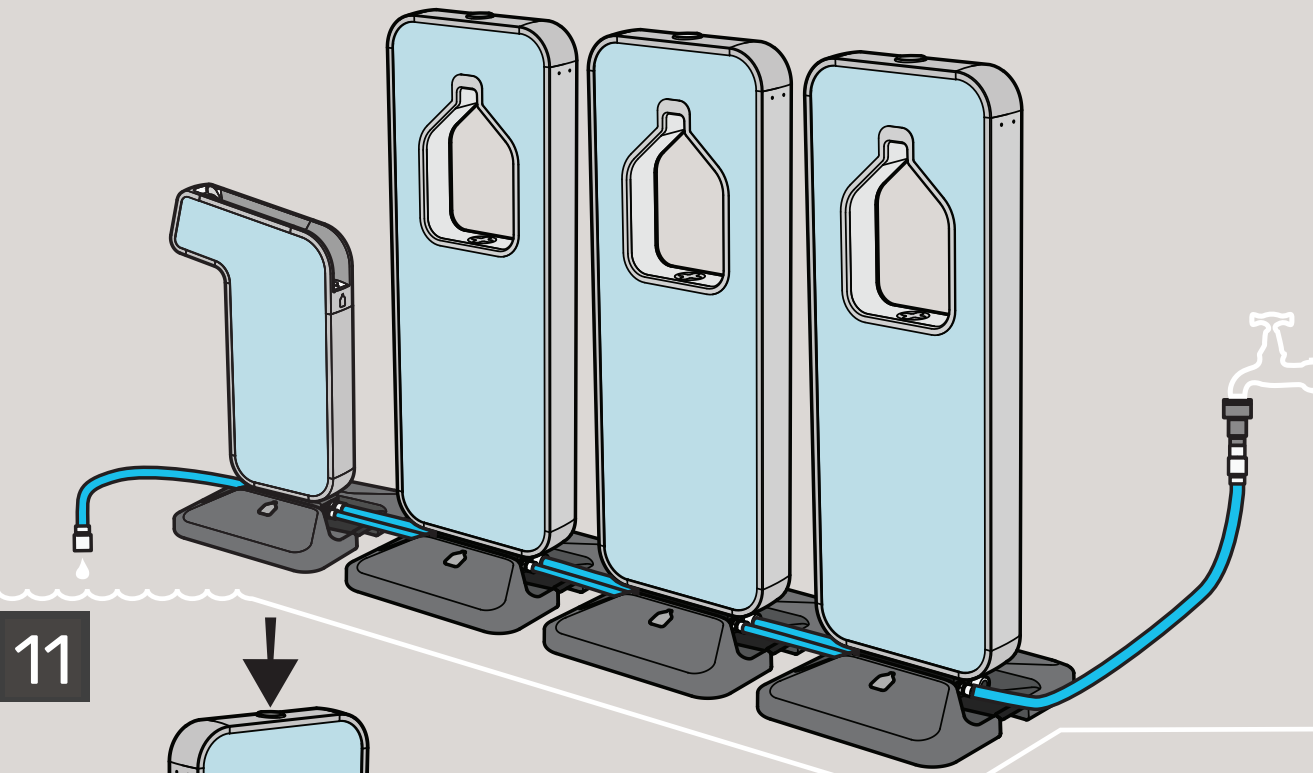
8 Follow steps 1 - 4.

10 Connect the water hose from the tap to the first or last unit.
Connect the drain hose to the first or last unit.
Turn on the tap.
Note: The unit has to have a drain hose connected to drain.

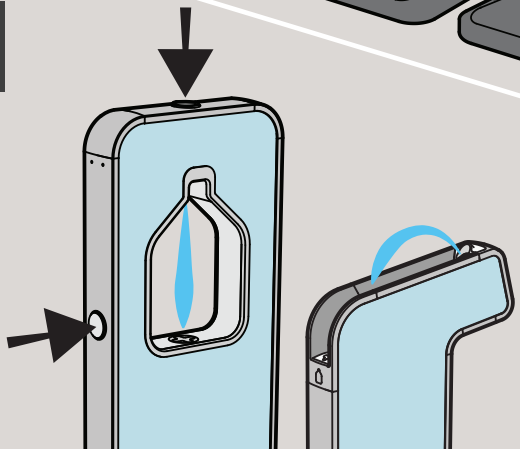
9



Use the joiner hoses to link the drain and water lines together between the units.



11



Press all the buttons to flush out any air bubbles and old water in the lines.
Run all the taps for 10 seconds.
Check for leaks. If a leak is found turn off the water and check connections.

Single Unit Pack Down

PACK DOWN - All Water Stations

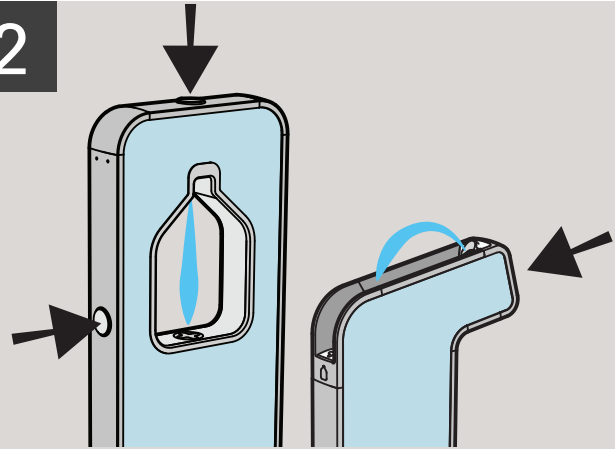
1

Turn off the water



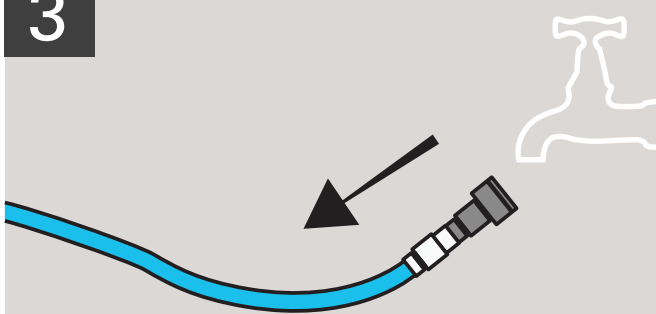
2

Press the buttons to remove all the pressurized water in the units.



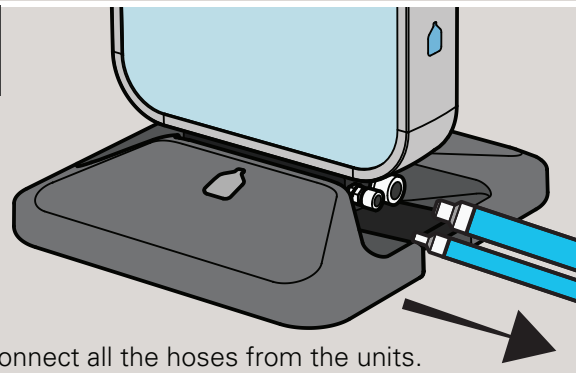
3

Remove the tap connection



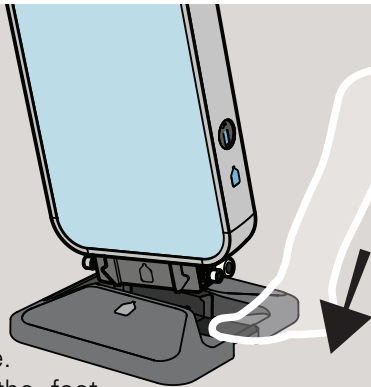
4

Disconnect all the hoses from the units.



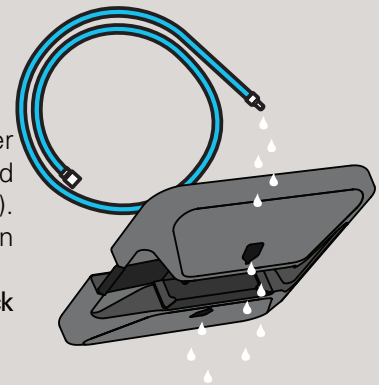
5

Remove the unit from the base.
Press down on the foot lever and lift the unit up.



6

Drain out all the water from the hoses and base plate (if filled). Before packing away in the bag.
Don't forget to check the flow meter.



* Image Source: Meetpat Bottle Refill Brochure 2019 (https://www.meetpat.com.au/wp-content/uploads/2019/10/MeetPat_Portable_Bottle-Refill-Brochure-MP-P-02.pdf)