



WorleyParsons

resources & energy

CAMDEN COUNCIL
NEPEAN RIVER FLOOD STUDY



REPORT FIGURES

FIGURE 1.1

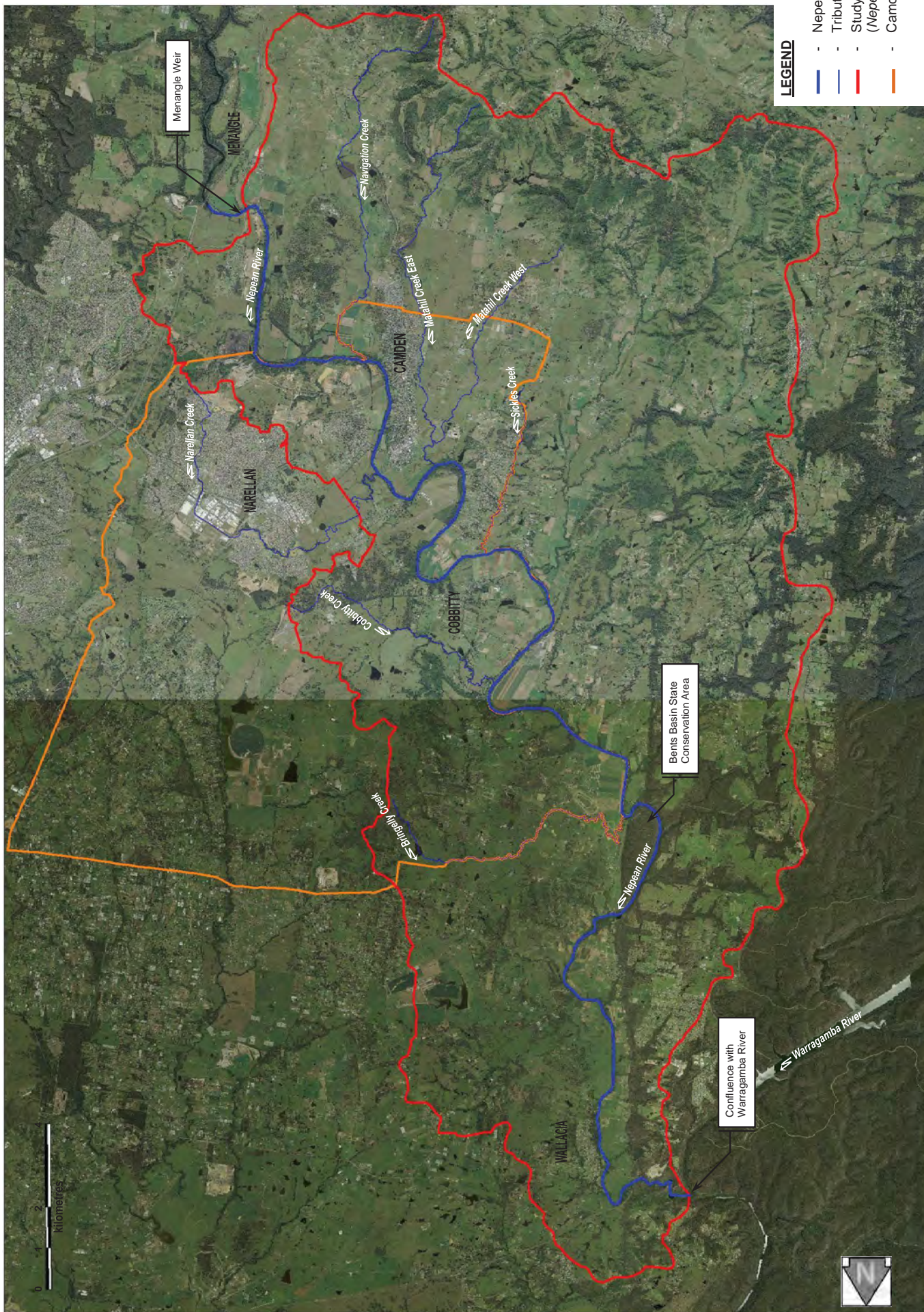
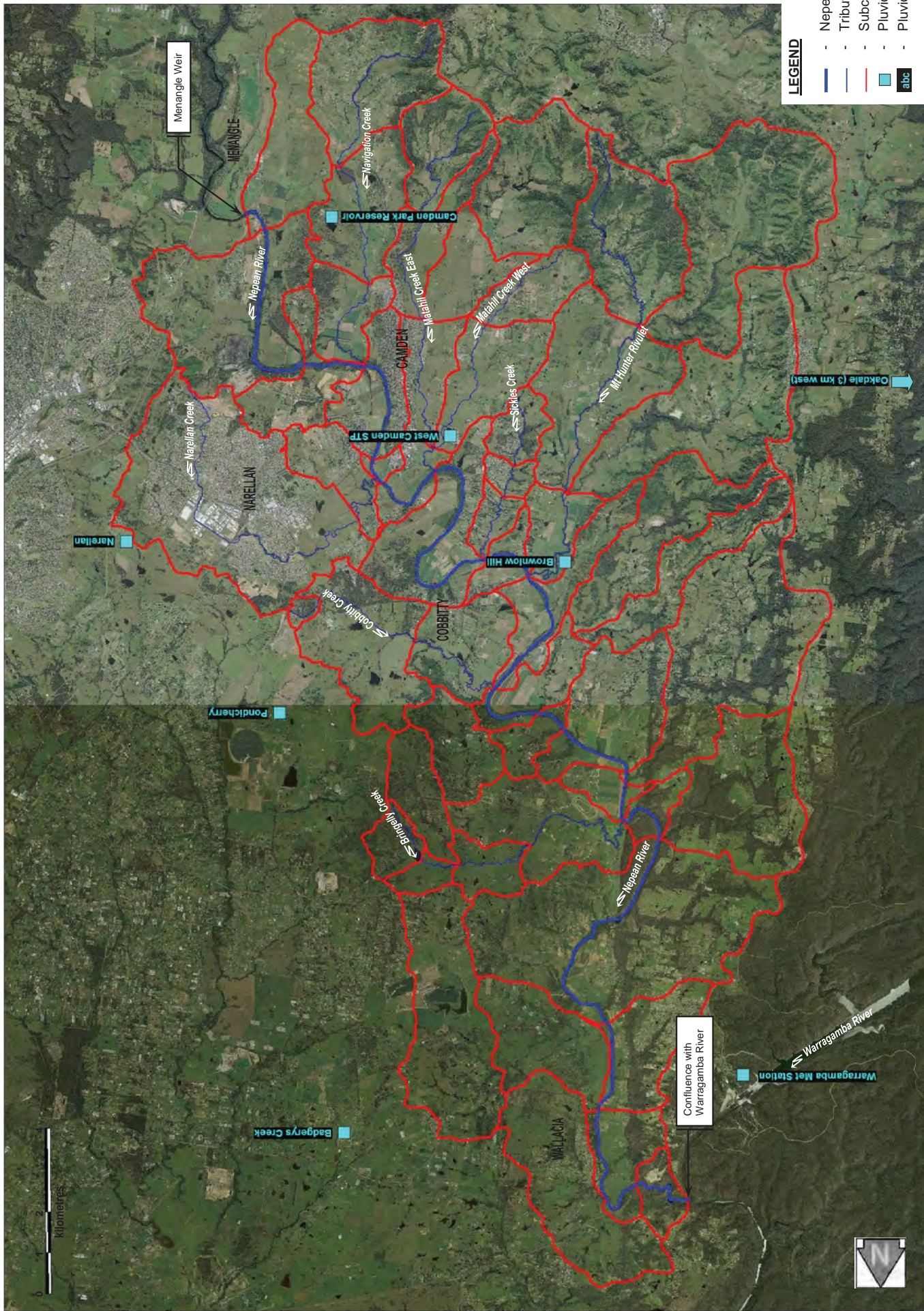
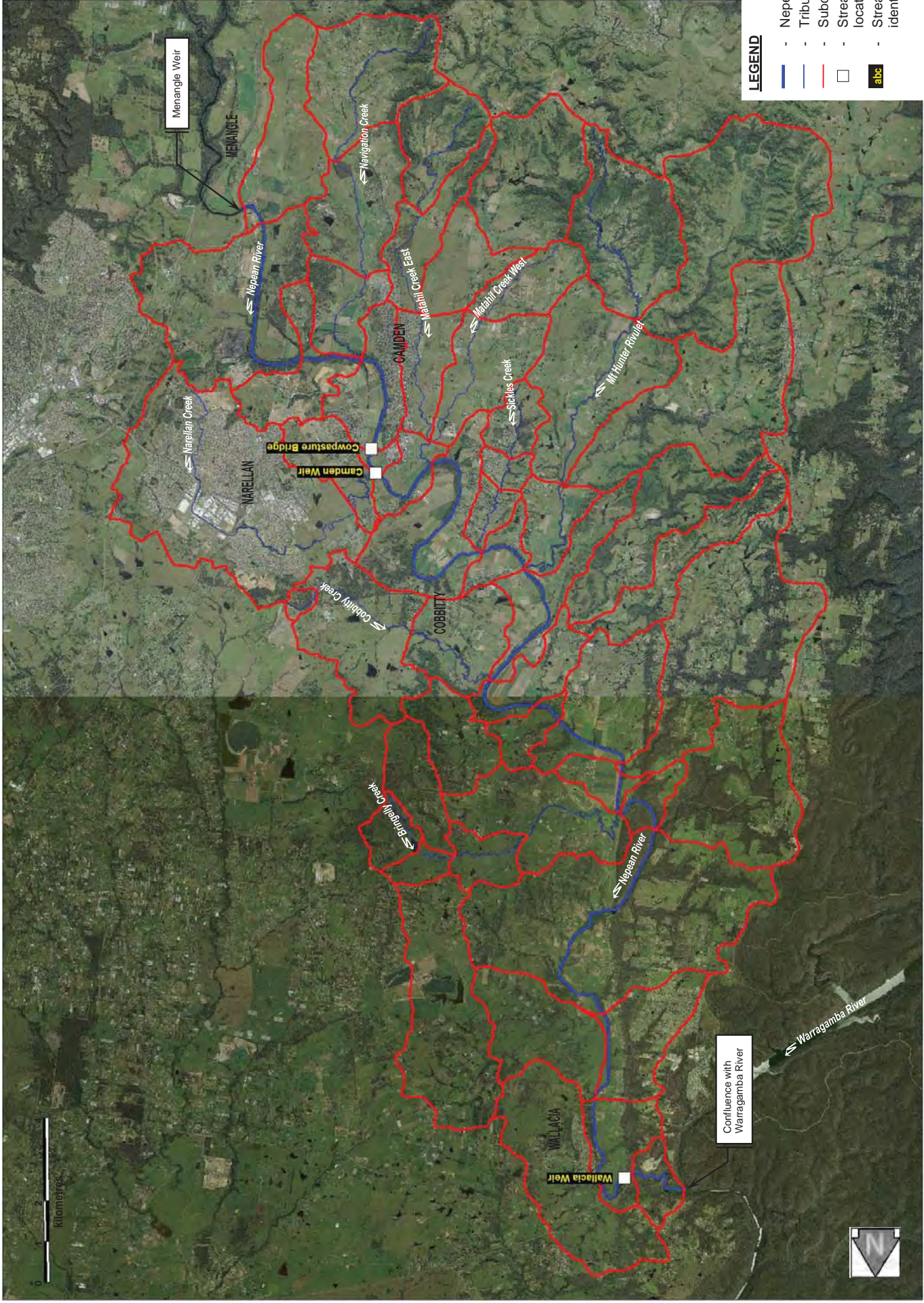


FIGURE 3.1



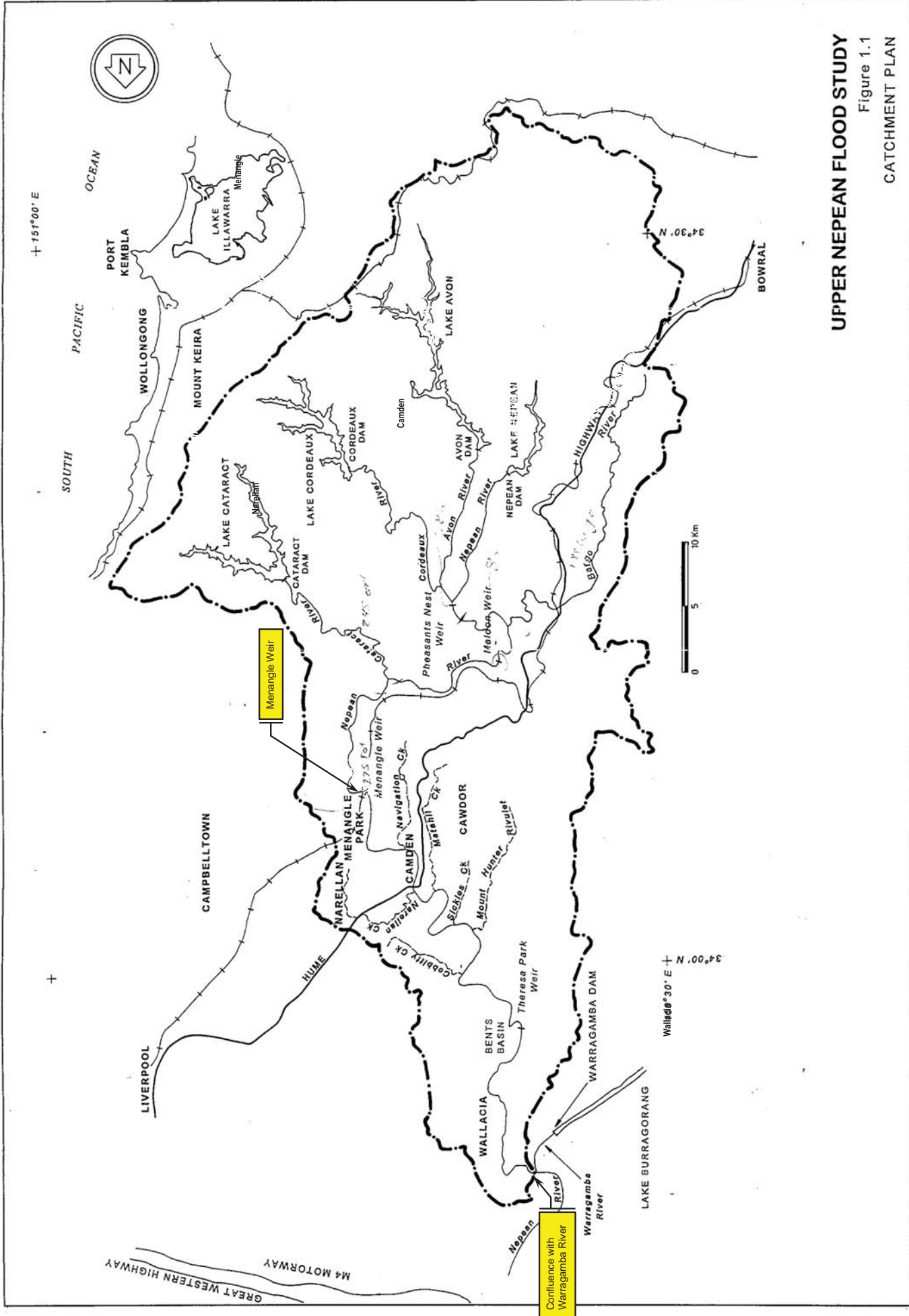
LOCATION OF PLUVIOMETER RAINFALL STATIONS USED IN CALIBRATION OF HYDROLOGIC MODEL

FIGURE 3.2



LOCATION OF STREAMFLOW GAUGING STATIONS

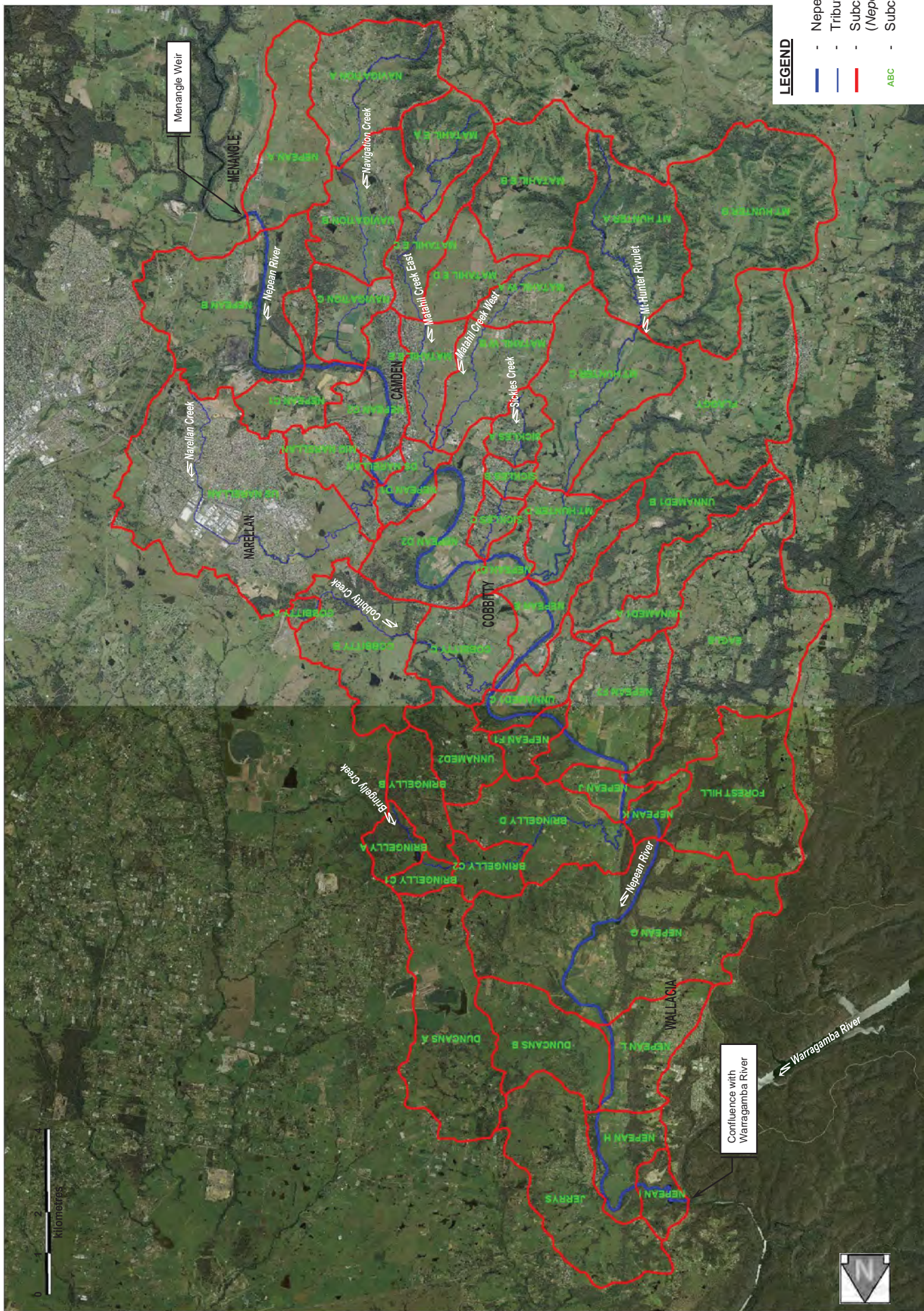
FIGURE 5.1



UPPER NEPEAN FLOOD STUDY
Figure 1.1
CATCHMENT PLAN

CATCHMENT LAYOUT OF HYDROLOGIC MODEL FROM
UPPER NEPEAN RIVER FLOOD STUDY (1995)

FIGURE 5.2



Note: Subcatchments draining to Nepean River upstream from Menangle Weir not shown – modelled previously as part of the Upper Nepean River Flood Study (1995). Subcatchments 'US NARELLAN' and 'MID NARELLAN' were modelled separately and in more detail as part of the Narellan Creek Flood Study (currently undertaken). The subcatchment outlines shown represent the overall areas of these subcatchments only

FIGURE 6.1

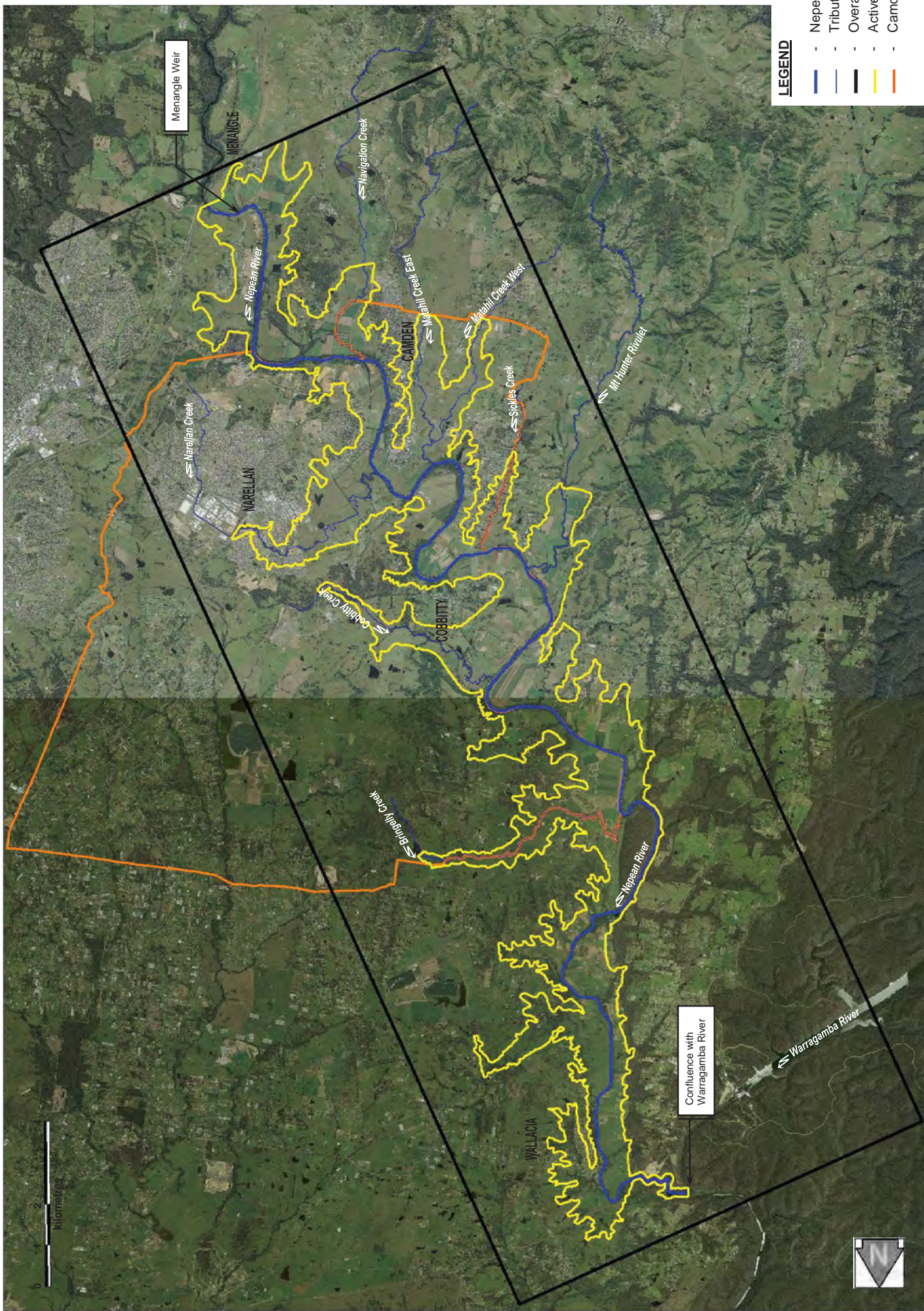


FIGURE 6.2

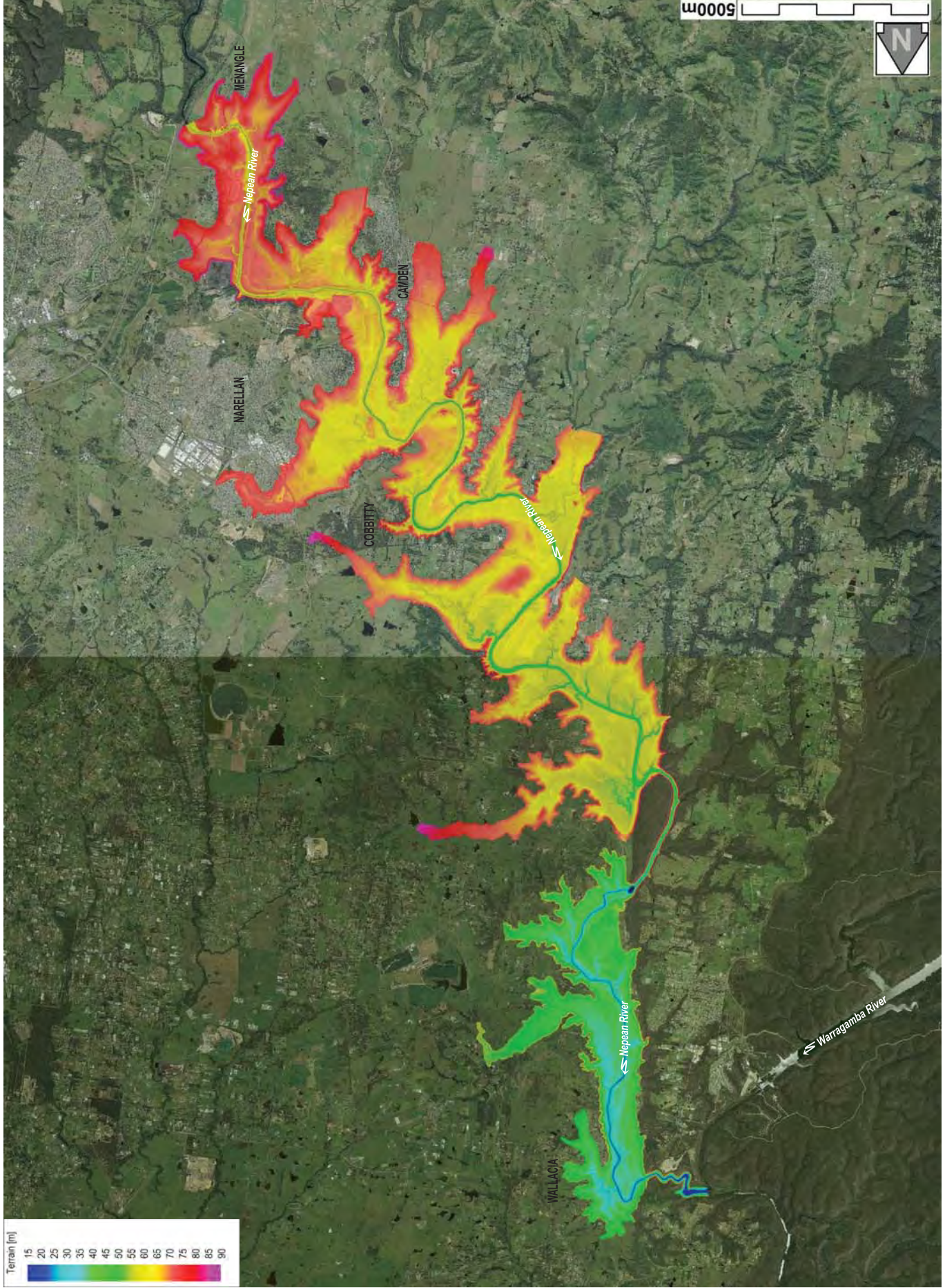


FIGURE 6.3

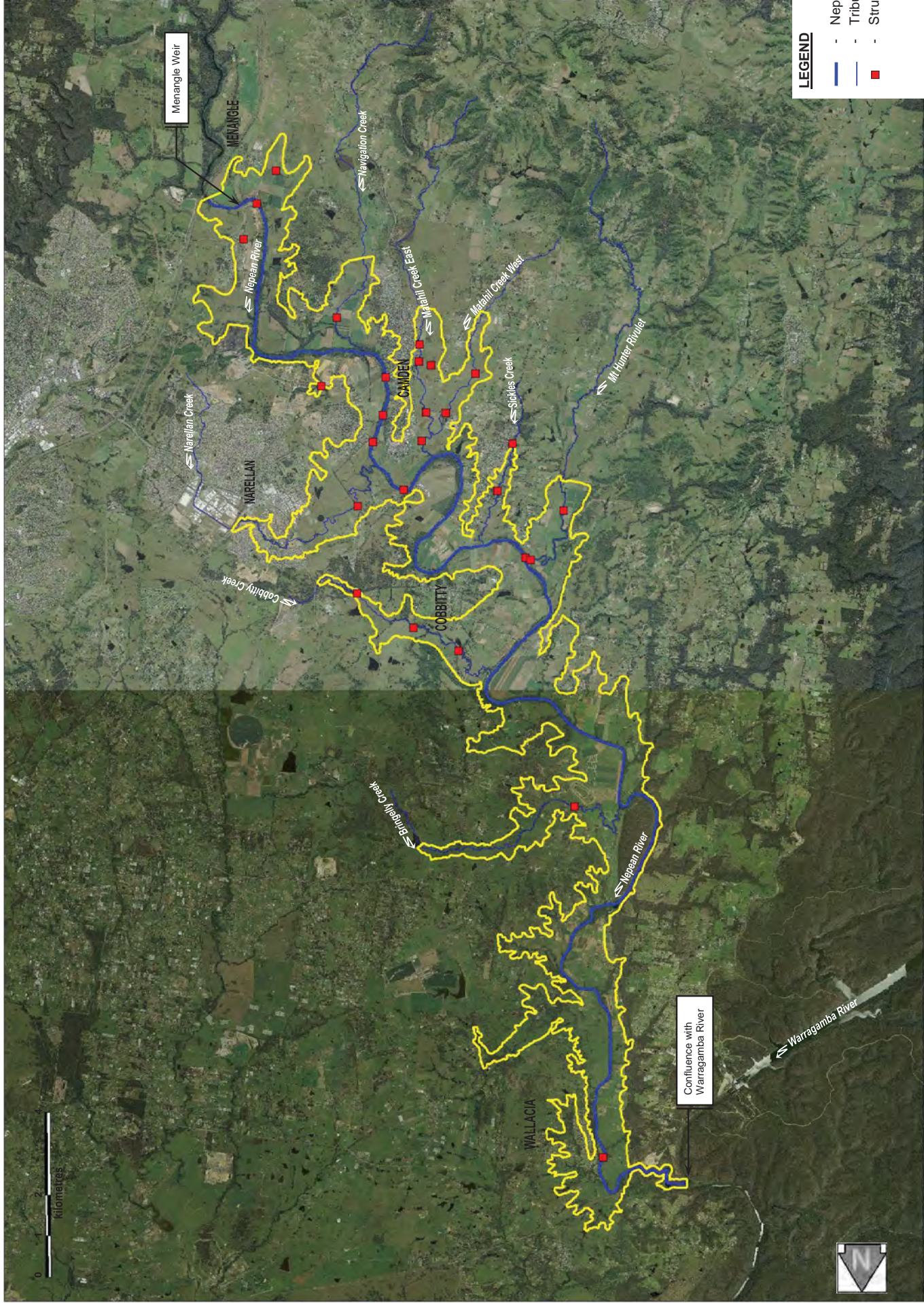


FIGURE 6.4

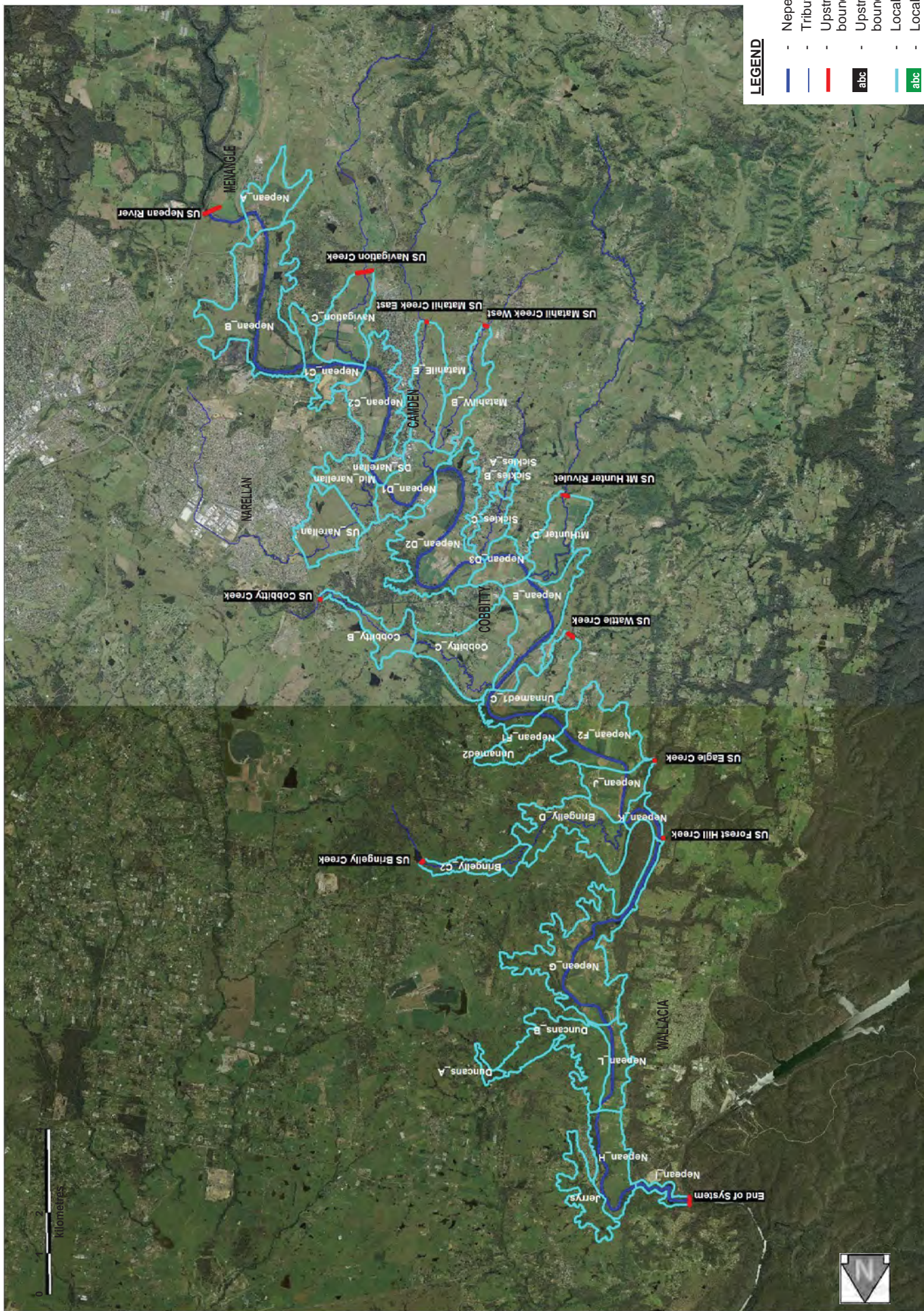
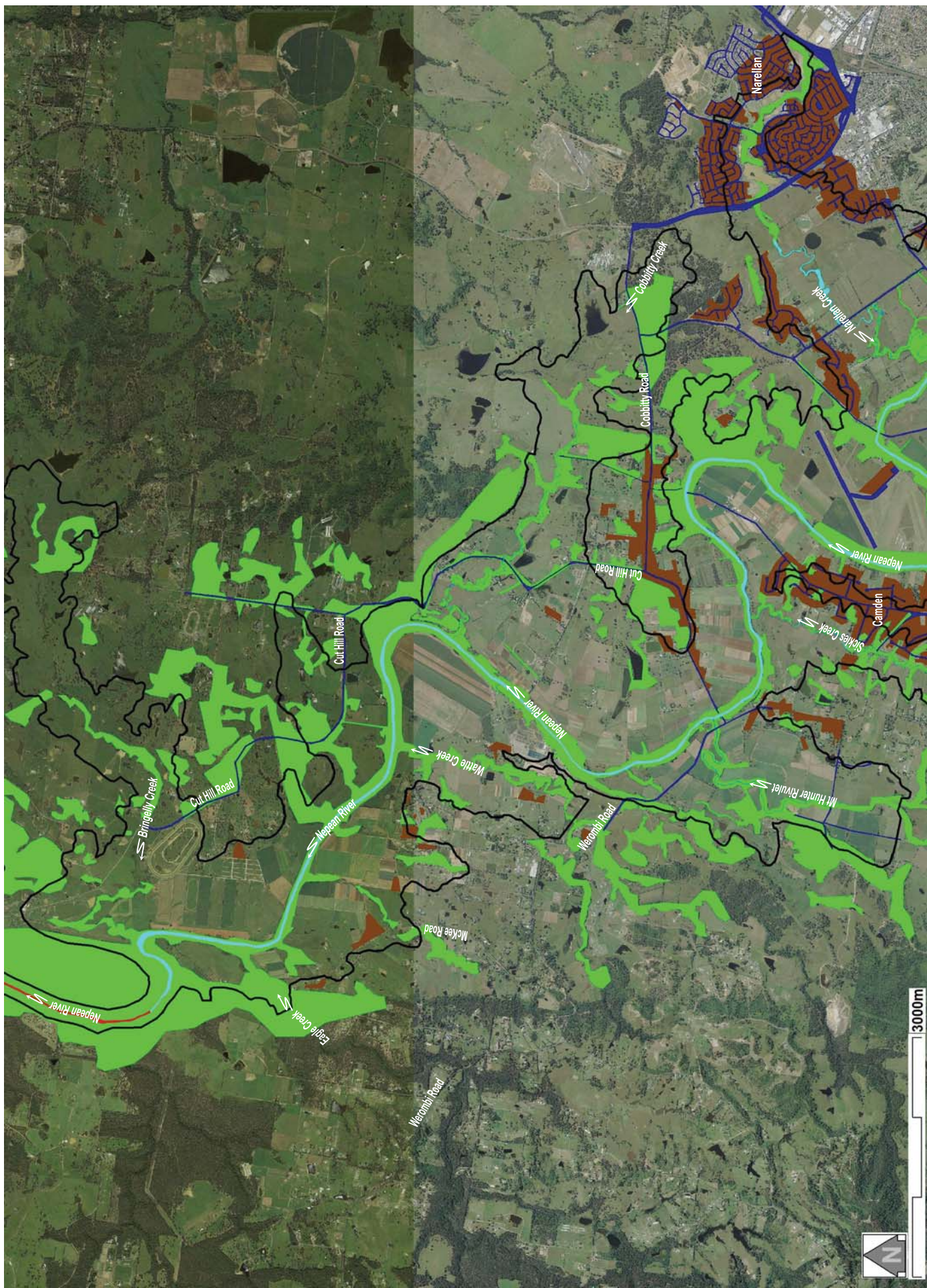


FIGURE 6.5



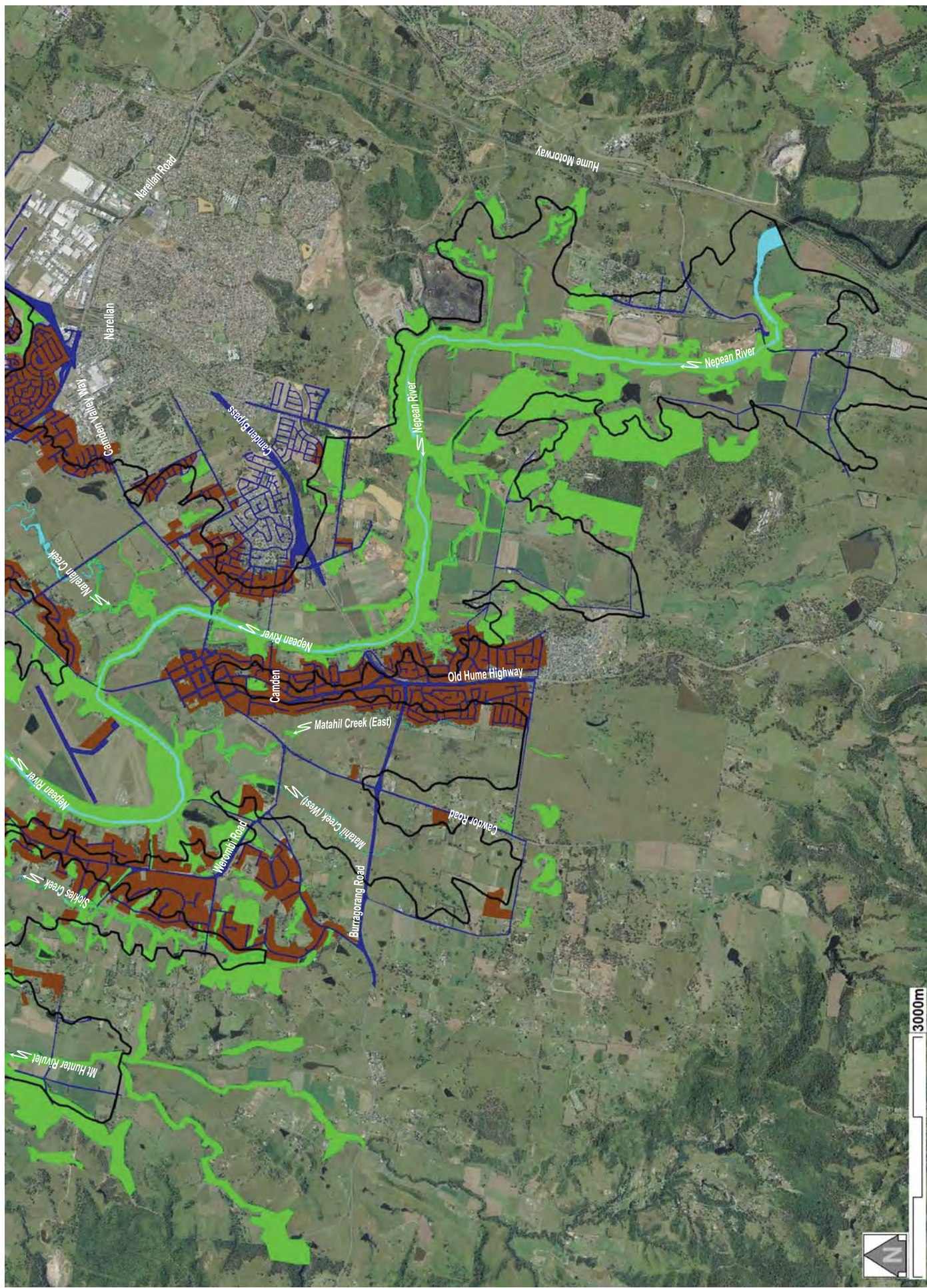
LEGEND:

- Model network outline
- Roads (n=0.02)
- Gorge (n=0.04)
- Watercourses (n=0.04)
- Heavily vegetated watercourses (n=0.06)
- Urban areas (n=0.15)
- Trees (n=0.10)

NOTES:

Floodplain areas within model extent but not marked reflect areas defined as Grass/Pasture/Brush (n=0.06)

FIGURE 6.6



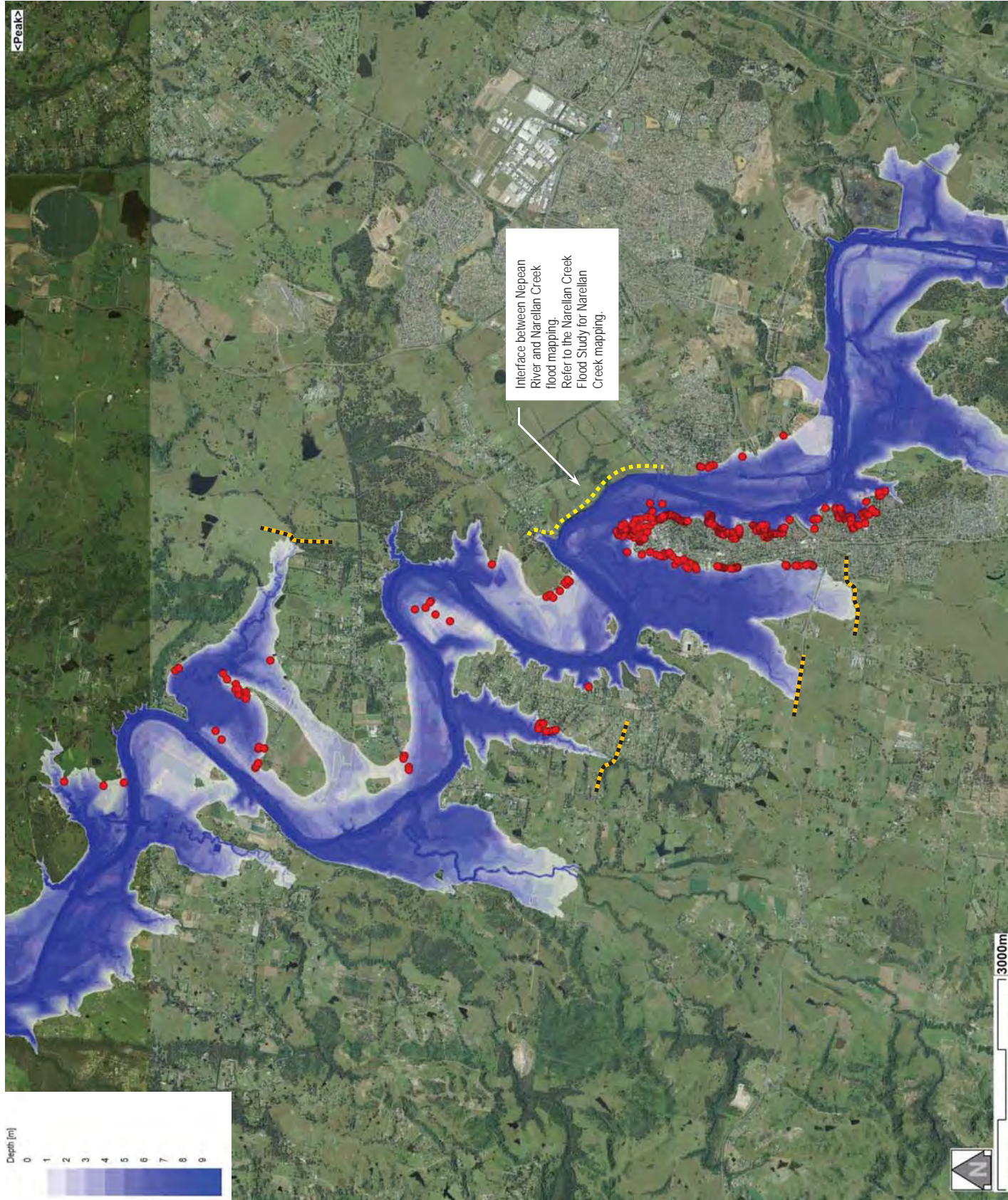
LEGEND:

- Model network outline
- Roads (n=0.02)
- Gorge (n=0.04)
- Watercourses (n=0.04)
- Heavily vegetated watercourses (n=0.06)
- Urban areas (n=0.15)
- Trees (n=0.10)

NOTES:

Floodplain areas within model extent but not marked reflect areas defined as Grass/Pasture/Brush (n=0.06)

FIGURE 10.1



NOTES:

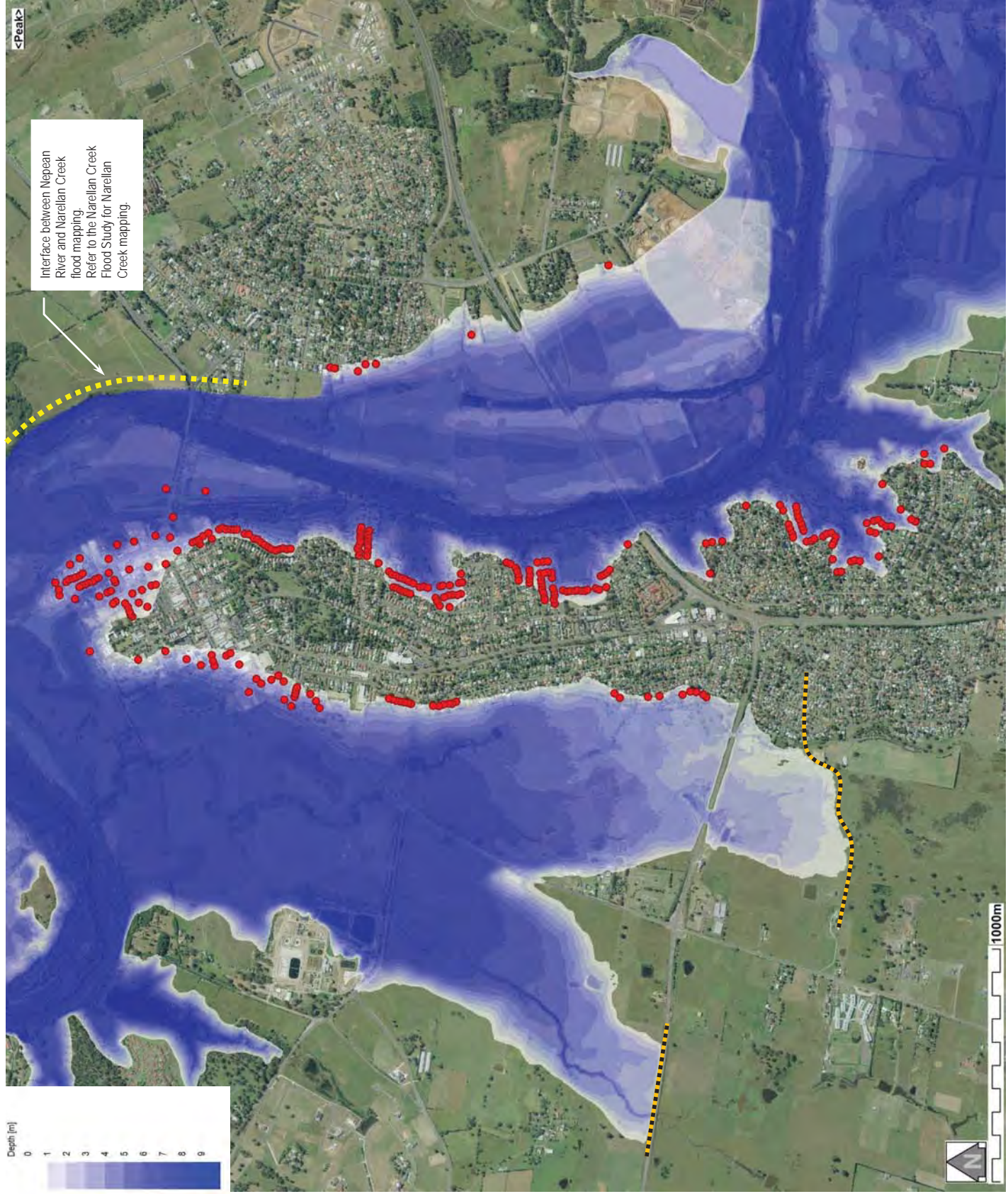
- Properties shown include those subject to below-floor and over-floor inundation

LEGEND:

- Upstream extent of tributary flood mapping. Local catchment flooding to be investigated in future studies.

PROPERTIES SUBJECT TO FLOOD DAMAGE DURING THE 1% AEP EVENT [OVERVIEW]

FIGURE 10.2



NOTES:

- Properties shown include those subject to below-floor and over-floor inundation

LEGEND:

- Upstream extent of tributary flood mapping. Local catchment flooding to be investigated in future studies.