

# CAMDEN RIPARIAN AREAS

## OVERARCHING & SPECIFIC AREA PLANS OF MANAGEMENT

---

**Prepared for  
Camden Council**

Pittendrigh Shinkfield Bruce Pty Limited  
Landscape Architecture  
Environmental Management



# CAMDEN RIPARIAN AREAS

## PLAN OF MANAGEMENT

---

### POM Part 1 Volume 1: Report

#### **Prepared for Camden Council**

Pittendrigh Shinkfield Bruce Pty Limited  
Landscape Architecture  
Environmental Management

April 2002  
PSB01428



The Strategic Plan for Camden (Camden Council, 1999) sets out a vision for what Camden will be like in the year 2025, stating:

*“The natural environment of Camden has been managed so that ecosystems have been successfully restored. Our river lives, the platypus is back and the vegetation is no longer threatened. A network of bush corridors has been established, and the floodplain has been protected (p.2).”*

*“The community values its natural environment and enjoys it in diverse yet responsible ways (p.2).”*

Drawing from the above, the outcome from the implementation of this Plan will be that:

*The riparian areas of the Camden LGA comprise an ecologically diverse, sustainable network of green corridors that stretch unbroken from the Nepean River to the catchment headwaters, and successfully integrate with the needs and desires of those who live and work in the surrounding urban and rural environment.*

## Background

The riparian (river/creek) corridors within the Camden Local Government Area (LGA) are subject to serious levels of degradation as a result of past rural and urban development processes. The drainage systems of the LGA have been developed in accordance with prevailing accepted practices. However, in hindsight and with an increasing ecological focus, we see that these have been severely disturbed and are under continuing stress, with typical impacts including loss of riparian vegetation, serious weed infestation to those remnants left, erosion of stream banks, poor water quality, modified flow patterns, channelisation and installation of low-flow pipe systems. This has resulted in major fragmentation of the larger riparian corridors, e.g. Nepean River and Narellan Creek, and the near complete loss of remnant vegetation to many of the smaller order streams. Such pressures impact heavily upon the biological diversity of the riparian zone.

Council is moving quickly to address the above situation with a far more ecologically aware design and management approach to its riparian corridors. This is exemplified by both the vision and strategies outlined in the Camden 2025 Strategic Plan (Camden, 1999), and Council's approach to new development in areas such as the Elderslie Infill.

## The Vision

The Strategic Plan for Camden (Camden Council, 1999) sets out a vision for what Camden will be like in the year 2025, stating:

*"The natural environment of Camden has been managed so that ecosystems have been successfully restored. Our river lives, the platypus is back and the vegetation is no longer threatened. A network of bush corridors has been established, and the floodplain has been protected (p.2)."*

*"The community values its natural environment and enjoys it in diverse yet responsible ways (p.2)."*

This Plan of Management has been prepared to set in place the necessary planning framework to bring this vision to fruition, and will act as a touchstone document to facilitate interdepartmental communication with regard to the management of riparian areas.

## Land to which this Plan Applies

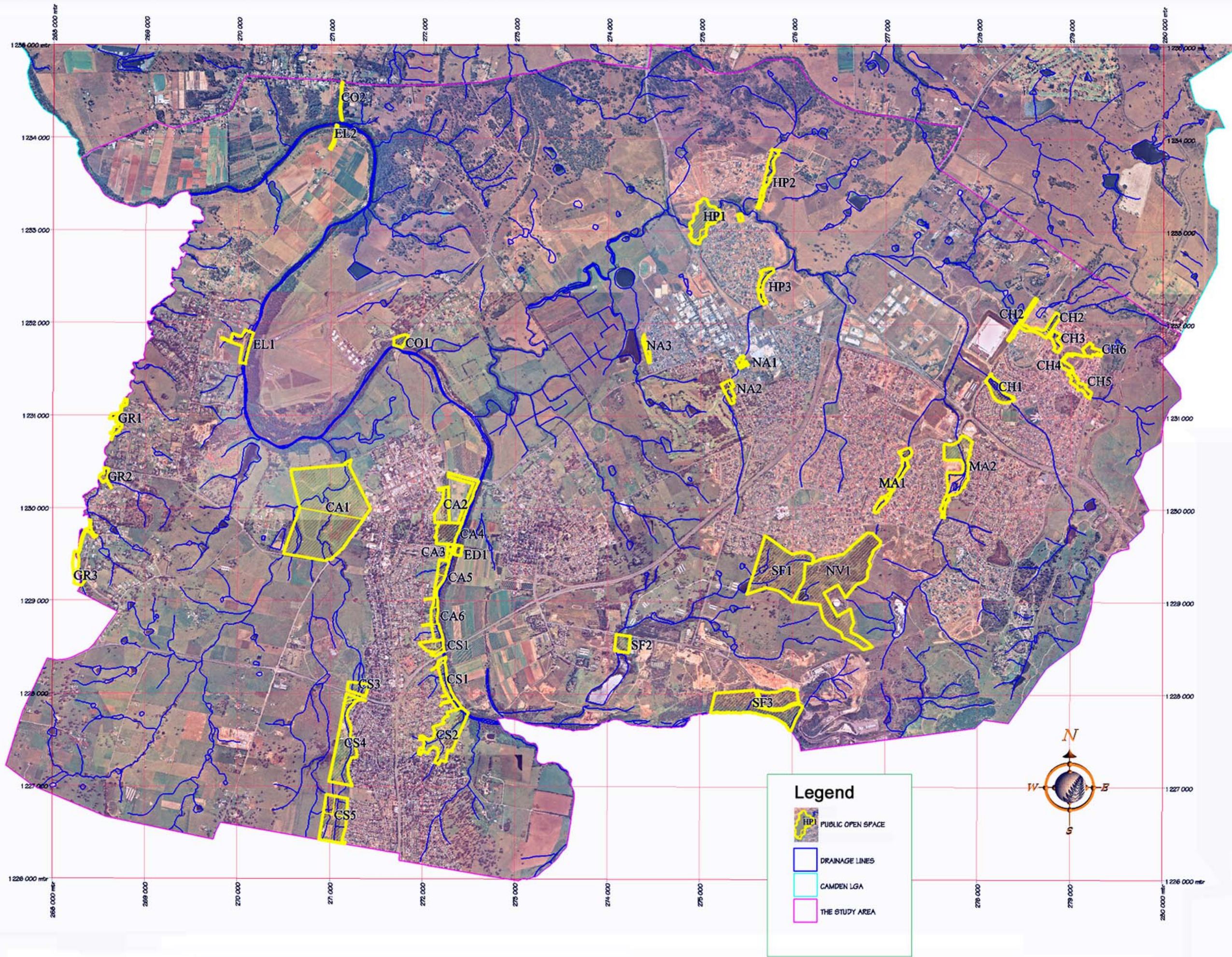
The framework within which land is covered by this Plan is defined by the geomorphological feature of the LGA's drainage system, and has focussed on the developed /developing southern half of Camden LGA. Broadly, this comprises the area south of Cobbitty Road and Turner Road. However, the Plan applies across the whole of the Camden Local Government Area.

This Plan applies to those areas of land categorised as wetlands and watercourses in open space areas under Council's care and control. This land is identified in Appendix 2 and shown in the map overleaf.









**LABELS AND DESCRIPTIONS**

- CA1 - Bicentennial Park - Matahil Creek
- CA2 - Rotary Cowpasture Reserve - Nepean River
- CA3 - Challeston Street Reserve - Nepean River
- CA4 - Kings Bush Reserve - Nepean River
- CA5 - John Peat Reserve - Nepean River
- CA6 - Cycleway - Nepean River
- CH1 - Sedgewick Reserve - Narellan Creek
- CH2 - Reserve - Kenny Creek
- CH3 - Charles Throsby Reserve - Kenny Creek
- CH4 - Boyd Reserve - Kenny Creek
- CH5 - Broughton Reserve - Kenny Creek
- CH6 - Smeaton Reserve - Kenny Creek
- CO1 - Macquarie Grove Reserve - Nepean River
- CO2 - Cobbitty Walk - Nepean River
- CS1 - Belgenny Reserve - Nepean River
- CS2 - Elizabeth Macarthur Reserve - Nepean River
- CS3 - Starr Close Reserve - Matahil Creek
- CS4 - Ponderosa Reserve & Ron Dine Memorial Reserve - Matahil Creek
- CS5 - Hayter Reserve - Matahil Creek
- ED1 - River Reserve - Nepean River
- EL1 - Reserve - Nepean River
- EL2 - Ellis Reserve - Nepean River
- GR1 - Sickles Creek Reserve - Sickles Creek
- GR2 - Smalls Reserve - Sickles Creek
- GR3 - Benwerren Reserve - Sickles Creek
- HP1 - Harrington Park Lake - Narellan Creek
- HP2 - Reserve - Campbell Rivulet / Homestead Creek Chase Reserve - Cross Creek
- HP3 - Reserve - Cross Creek
- MA1 - The Cascades
- MA2 - Birriwa Reserve - Lake Annan
- NA1 - Coghill Reserve - Cross Creek
- NA2 - Wilton Reserve - Cross Creek
- NA3 - Col Barratt Reserve - Sutons Dam
- NV1 - William Howe Regional Park
- SF1 - Gundungurra Reserve
- SF2 - Spring Reserve
- SF3 - Jacks Gully - Nepean River

Imagery Sources:  
 Photomosaic created by Ecograph  
 Aerial Photography (1:6000 Colour dated Nov/Dec 2000)  
 supplied by Geosco (NSW) Pty Ltd.

**PSB**

**ECOGRAPH**  
 Ecological and Geographical  
 Information System Consultants  
 Liverpool Valley Pk.  
 Liverpool via MURKULLUMBAH 2484  
 New South Wales AUSTRALIA  
 Ph. 02 66793479 Fax. 02 66793419  
 Email: info@ecograph.com.au

**Map 3: Camden Riparian Open Space Plan**

Projection - ISG Zone 56/1





## Plan Structure

This Plan of Management has been prepared in accordance with the provisions of the *Local Government Act 1993*. It specifies the manner in which the riparian open space areas within the Camden Local Government Area (LGA) will be used and managed, and the objectives for that use and management.

Under the provisions of the *Local Government Act 1993*, for the purposes of use and management, community land is categorised into one or more categories and core objectives for the management of such lands are outlined as below:

- natural area;
- sportsground;
- park;
- an area of cultural significance, and
- general community use.

The land covered by this Plan falls under the category of 'natural area'.

Core objectives for management of community land categorised as a natural area are:

- a) to conserve biodiversity and maintain ecosystem function;
- b) to maintain the land in it's natural state and setting;
- c) to provide for the restoration or regeneration of the land;
- d) to provide for community use of and access to the land to the land in such as way as will minimise and mitigate any disturbance caused by human intrusion, and
- e) to assist in and facilitate the implementation of any provisions restricting the use and management of the land that are set out in a recovery plan or threat abatement plan prepared under the *Threatened Species Conservation Act 1995* or the *Fisheries Management Act 1994*.

Further, under the provisions of the Act, community land categorised as a 'natural area' must be further categorised into one or more specified subcategories (s36(5)) as follows:

- bushland;
- wetland;
- escarpment;
- watercourse;
- foreshore, and
- other prescribed category.

For this Plan, two sub-categories are addressed, being 'watercourse' and 'wetland'. These sub-categories have further developed core objectives applied to them, which are described in the Introduction of the Plan.

### Figure 1. Riparian Planning Framework

For the purposes of this Plan, a distinction is made between remnant natural ecosystems and recreated ecosystems which is outlined below:

- a 'remnant' area being one that is an essentially intact ecological community (although often severely degraded), which has a primary conservation focus, and
- a 'constructed' area being one that is essentially a re-created natural environment closely associated with development (e.g. immediately adjacent to residential or industrial development), which has both a conservation and recreational focus.

An aim of this Plan is to address issues broadly applicable across all riparian areas (e.g. the undertaking of a review of Council structure with regard to the design, management and maintenance of riparian areas; the implementation of a Stream Restoration Vegetation Management Program for all remnant riparian areas; and the undertaking of an LGA wide mosquito hazard risk assessment to inform the design and management of constructed wetlands and watercourses).

The Plan addresses and discusses the major issues for management of riparian areas. For each issue, strategies have been developed and these strategies incorporated into an action plan. The actions have been categorised as low, medium and high priority to guide the allocation of resources and funding.

The issues addressed by the Plan encompass:

- biodiversity conservation;
- vegetation management;
- fauna management;
- water quality;
- recreation;
- landscape character;
- cultural heritage;
- public safety and health;
- maintenance;
- monitoring and evaluation;
- urban development process;
- community issues, and
- catchment issues.

### **Specific Area Plans of Management**

Notwithstanding the nature of each site, many of the proposed strategies and actions from this Plan will be applicable to each specific area, for which separate Specific Area Plans of Management will be prepared. Strategies and actions applicable to each specific area will therefore avoid unnecessary duplication of information and constitute cost savings to the preparation of these documents, with each of these plans only needing to deal with those issues not already covered by this overarching Plan.

A Specific Area Plan of Management was prepared for Lake Annan as part of the preparation of this Plan, and should be reviewed in conjunction with this document.

## Recommendations

Following are the eleven highest priority recommendations of this Plan. Other actions are listed in the Action Plan.

1. Reinforce the relationship between the shared planning and outcomes model of service delivery, and the design and management of wetlands and watercourses.
2. Recognise the role of the Outcomes Branch in facilitating, co-ordinating and empowering the organisation to achieve sustainable outcomes for the design and management of wetlands and watercourses.
3. Supplement Council's Biodiversity Inventory and incorporate the information into its GIS system in order to guide management decisions.
4. Prepare a Stream Restoration and Vegetation Management Program for all riparian areas under Council care, control and management.
5. Prepare Specific Area Plans of Management for all land falling under this Plan.
6. Put in place measures that require all new sub-division developments to incorporate WSUD principles.
7. Prepare a set of readily understood design and management guidelines that detail Council's preferred approach to constructed wetlands and watercourses.
8. Undertake a landscape survey of all remaining riparian remnants within the LGA that comprise landscape character reference types, and put in place measures to conserve these.
9. Put in place measures that require all new developments to incorporate comprehensive GPT and litter trapping systems.
10. All new constructed riparian areas should have detailed annual operational / maintenance costs described and agreed to or approved by Council prior to DA consent.
11. Commence regular water quality monitoring for existing facilities and in catchments proposed for development.

## The Outcome

Drawing from the above, the outcome that is sought from the implementation of this Plan is that:

*The riparian areas of the Camden LGA will comprise an ecologically diverse, sustainable network of green corridors that stretch unbroken from the Nepean River to the catchment headwaters, and successfully integrate with the needs and desires of those who live and work in the surrounding urban and rural environment.*







# CAMDEN RIPARIAN AREAS

## Plan Of Management

### Contents

---

<b>EXECUTIVE SUMMARY.....</b>	<b>i-vi</b>
<b>CONTENTS.....</b>	<b>vii-x</b>
<b>BASIS FOR MANAGEMENT .....</b>	<b>1</b>
<b>SECTION 1: MANAGEMENT.....</b>	<b>2</b>
1.1 Purpose of the plan.....	2
1.2 core objectives OF THE PLAN.....	2
1.3 Structure of the plan.....	3
1.3.1 The ‘Overarching’ Camden Riparian Areas Plan.....	3
1.3.2 Specific Area Plans of Management.....	4
1.3.3 Rationale of Plan Structure .....	4
1.4 Land to which the plan applies (scope).....	5
1.5 Management authority, tenure & ownership.....	5
1.6 Planning Framework.....	5
1.6.1 Camden 2025 Strategic Plan.....	5
1.7 Background Information .....	9
1.7.1 Aboriginal History.....	9
1.7.2 European History.....	9
<b>SECTION 2: NATURAL RESOURCE INFORMATION .....</b>	<b>13</b>
2.1 Bio-regional Context.....	10
2.2 Topography.....	13
2.3 Geology and Soils .....	13
2.4 Climate.....	14
2.5 Flooding.....	14
2.6 Catchment Context.....	14
2.7 Flora and Fauna Issues .....	15
2.8 Native Vegetation .....	15
2.8.1 Sydney Coastal River-Flat Forest.....	16
2.8.2 Cumberland Plain Woodland .....	17
2.8.3 Freshwater Wetlands.....	18
2.8.4 Elderslie Banksia Scrub Forest.....	18

2.8.5 Threatened Flora Species ..... 19

2.9 Fauna..... 20

2.9.1 Fauna in the Riparian Environment..... 20

2.9.2 Threatened Fauna Species ..... 20

**SECTION 3: STRATEGIC FRAMEWORK ..... 23**

3.1 The Vision ..... 23

3.2 Management Objectives..... 23

3.3 Key Supporting Plans..... 24

**ISSUES AND STRATEGIES ..... 25**

**SECTION 4: MANAGEMENT ISSUES..... 26**

4.1 Biodiversity Conservation ..... 26

4.1.1 Endangered Ecological Communities..... 26

4.1.2 Biodiversity Inventory ..... 27

4.1.3 Habitat Corridors and Connectivity ..... 27

4.1.4 Nepean River Weirs ..... 28

4.1.5 Opportunities..... 29

4.2 Vegetation Management ..... 29

4.2.1 Native Riparian Vegetation ..... 29

4.2.2 Aquatic Weeds & Pest Plants ..... 29

4.2.3 Terrestrial Weeds..... 31

4.3 Fauna..... 32

4.3.1 Native Fauna (Aquatic/Terrestrial Habitat)..... 32

4.3.2 Pest Fauna ..... 32

4.3.4 Domestic and Nuisance Native Water Birds ..... 33

4.3.5 Other Feral Animals ..... 33

4.3.6 Companion Animals..... 33

4.4 Water Quality..... 34

4.4.1 Stormwater Pollution ..... 34

4.4.2 Water Clarity..... 35

4.4.3 Litter..... 35

4.4.4 Stormwater Treatment Infrastructure ..... 36

4.5 Erosion..... 37

4.6 Salinity ..... 37

4.7 Recreation..... 38

4.7.1 Appropriate Types of Recreational Usage ..... 38

4.7.2 Public Access..... 38

4.8 Landscape Character..... 39

4.8.1 The Nepean River ..... 39

4.8.2 Catchment Drainage Lines..... 39

4.8.3 Stream Morphology ..... 39

4.8.4 Landscape Character ..... 40

4.9 Cultural Heritage ..... 41

4.10 Public Safety & Health ..... 42

4.11 Maintenance..... 42

    4.11.1 Constructed Wetland / Watercourse Design ..... 43

    4.11.2 Council Structure..... 43

    4.11.3 Staff Acquisition / Training ..... 45

4.12 Monitoring And Evaluation ..... 45

4.13 Urban Development Process..... 45

    4.13.1 Development Controls ..... 45

    4.13.2 Handover Process ..... 46

4.14 Community Issues..... 46

    4.14.1 Communicating the Vision ..... 46

    4.14.2 Design Intent ..... 48

4.15 Catchment Issues ..... 48

    4.15.1 Water Quality..... 48

    4.15.2 Water Quantity..... 49

**SECTION 5: MANAGEMENT STRATEGIES ..... 51**

    STRATEGY 1: BIODIVERSITY CONSERVATION..... 51

        1a. Endangered Ecological Communities ..... 51

        1b. Biodiversity Inventory..... 51

        1c. Habitat Corridors and Connectivity ..... 51

        1d. Nepean River Weirs..... 51

        1e. Opportunities..... 52

    STRATEGY 2: VEGETATION MANAGEMENT..... 52

        2a. Weed Management Program..... 52

        2b. Communication..... 52

        2c. Stream Restoration Vegetation Management Program ..... 53

        2d. Algae Management ..... 53

    STRATEGY 3: FAUNA MANAGEMENT..... 54

        3a. Mosquito Fish..... 54

        3b. Carp..... 54

        3c. Mosquitoes ..... 54

        3d. Nuisance Native Water Birds ..... 55

        3e. Domestic Ducks ..... 55

        3f. Other Feral Animals ..... 55

        3g. Companion Animals ..... 56

    STRATEGY 4: WATER QUALITY ..... 56

        4a. Water Clarity..... 56

        4b. Litter ..... 56

        4c. Stormwater Treatment Infrastructure ..... 57

        4d. Erosion..... 57

        4e. Salinity..... 58

STRATEGY 5: RECREATION..... 58

    5a. Appropriate Types of Recreational Usage..... 58

    5b. Public Access ..... 58

STRATEGY 6: LANDSCAPE CHARACTER..... 59

    6a. The Nepean River..... 59

    6b. Catchment Drainage Lines ..... 59

    6c. Stream Morphology..... 59

    6d. Landscape Character..... 60

STRATEGY 7: CULTURAL HERITAGE..... 60

STRATEGY 8: PUBLIC SAFETY & HEALTH..... 60

    8a. Safety to Operators. .... 60

STRATEGY 9: MAINTENANCE..... 61

    9a. Maintenance Mapping ..... 61

    9b. Maintenance Responsibility ..... 61

    9c. Funding & Maintenance Costs..... 62

    9d. Maintenance Programs ..... 62

    9e. Staff Skills ..... 62

STRATEGY 10: MONITORING AND EVALUATION ..... 63

STRATEGY 11: URBAN DEVELOPMENT PROCESS..... 64

    11a. Development Controls..... 64

    11b. Hand Over Process..... 64

STRATEGY 12: COMMUNITY ISSUES ..... 65

STRATEGY 13: CATCHMENT ISSUES..... 66

**IMPLEMENTATION..... 67**

**SECTION 6: ACTION PLAN..... 68**

    6.1 Application of management policies & guidelines..... 68

    6.2 Action plan Scope..... 68

    6.3 Review of plan..... 68

STRATEGY 1: BIODIVERSITY CONSERVATION..... 68

STRATEGY 2: VEGETATION MANAGEMENT..... 68

STRATEGY 3: FAUNA MANAGEMENT..... 70

STRATEGY 4: WATER QUALITY ..... 72

STRATEGY 5: RECREATION..... 74

STRATEGY 6: LANDSCAPE CHARACTER..... 75

STRATEGY 7: CULTURAL HERITAGE..... 75

STRATEGY 8: PUBLIC SAFETY & HEALTH..... 76

STRATEGY 9: MAINTENANCE..... 77

STRATEGY 10: MONITORING AND EVALUATION ..... 79

STRATEGY 11: URBAN DEVELOPMENT PROCESS..... 79

STRATEGY 12: COMMUNITY ISSUES ..... 82

STRATEGY 13: CATCHMENT ISSUES..... 83

IMPLEMENTATION OF THIS PLAN ..... 84

**SUPPLEMENTARY INFORMATION..... 85**

**SECTION 7: GLOSSARY OF TERMS..... 86**

7.1 Definitions ..... 86

7.2 Abbreviations ..... 89

**SECTION 8: BIBLIOGRAPHY..... 90**

**SECTION 9: APPENDICES..... 95**

APPENDIX 1: Camden Council Noxious Weeds List ..... 96

APPENDIX 2: Schedule of Land Parcels COVERED BY THIS PLAN..... 99

APPENDIX 3: Riparian Planning Framework ..... 103

APPENDIX 4: Literature Review Summaries..... 114

SUMMARY 1: River Landscapes – Riparian Land Management Technical Guidelines Volume 1: Principles Of Sound Management by Lovett, S & Price, P (Eds) 1999, LWRRDC, Canberra.....115

SUMMARY 2: River Landscapes – Riparian Land Management Technical Guidelines Volume 2: On-ground Management Tools and Techniques by Lovett, S & Price, P (Eds) 1999, LWRRDC, Canberra. .... 121

SUMMARY 3: A REHABILITATION MANUAL FOR AUSTRALIAN STREAMS by Rutherford, I D, Jerie K and Marsh, N, 2000, Cooperative Research Centre for Catchment Hydrology, Monash University. .... 125

SUMMARY 4: NEPEAN RIVER RIPARIAN HEALTH ASSESSMENT FOR CAMDEN COUNCIL by Adams, J, 2000 ..... 134

SUMMARY 5: HAWKESBURY NEPEAN CATCHMENT MANAGEMENT TRUST (HNCMT) ADVOCACY POSITION ON RIVERBANK MANAGEMENT by Hawkesbury Nepean Catchment Management Trust, 2000 ..... 139

SUMMARY 6: CAMDEN STRUCTURE PLAN REPORT by Camden Council, March 2000..... 143

SUMMARY 7: HAWKESBURY-NEPEAN SCENIC QUALITY STUDY Department Urban Affairs and Planning, 1996..... 144

SUMMARY 8: INDEPENDENT INQUIRY INTO THE HAWKESBURY NEPEAN RIVER SYSTEM by the Healthy Rivers Commission of NSW, August 1998 ..... 145

SUMMARY 9: STATEMENT OF JOINT INTENT FOR THE HAWKESBURY NEPEAN RIVER SYSTEM  
 by the following NSW Government Agencies: Environment Protection Authority, Department of Land and Water Conservation, Department of Urban Affairs and Planning, NSW Agriculture, NSW Fisheries, National Parks and Wildlife Service, The Cabinet Office, Sydney Catchment Authority, Department of Mineral Resources, Department of Local Government, Sydney Water Corporation, Hawkesbury Nepean Catchment Management Trust. .... 148

SUMMARY 10: HAWKESBURY LOWER NEPEAN CATCHMENT BLUEPRINT  
 by Department of Land and Water Conservation and Local Government Advisory Group, 2002..... 149

SUMMARY 11: UPPER NEPEAN RIVER CATCHMENT STORMWATER MANAGEMENT PLAN  
 by Boyden and Partners, 1999..... 149

APPENDIX 5: The Platypus in Camden..... 149