

# Aerated Wastewater Treatment Systems (AWTS)

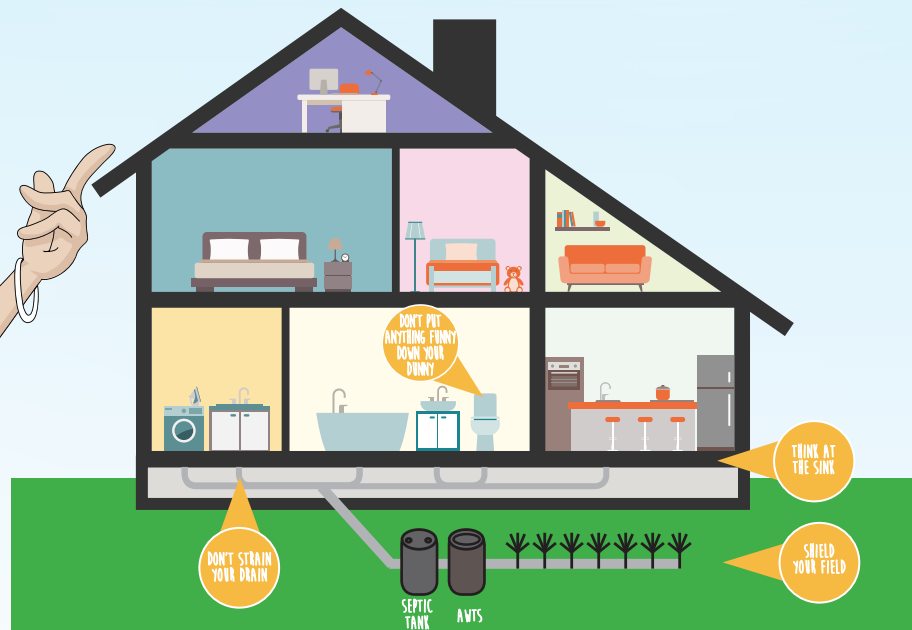
## What is an AWTS?

An AWTS is a purpose built system used for the treatment of wastewater.

## How does and AWTS work?

An AWTS consists of one or two tanks which contain a series of chambers. Wastewater enters the first chamber and solids settle to the bottom to form a sludge layer. The scum layer, containing fats and greases collects at the top of the chamber and the partially clarified wastewater flows in to the second chamber.

In the second chamber the wastewater is aerated and treated further by biological activity. A third chamber allows additional clarification through the settling of any remaining solids. The treated effluent is finally disinfected before disposal via an approved method such as spray irrigation or subsurface drip irrigation can take place.



It is the owner's responsibility to ensure that:

- Their AWTS is serviced quarterly by a qualified service technician and any repairs to the system recommended by the technician are undertaken promptly.
- Warning signs are displayed within the effluent disposal area.
- The location of any sprinklers (where approved) comply with the buffer distance requirements specified by council.
- Power is maintained to the system at all times.
- The high water and air alarms for the system are functioning.

# Do Your Part, Be Septic Smart

## The Do's and Don'ts of your Aerated Wastewater Treatment System (AWTS)

### Keep it protected - get it inspected

#### ✓ DO

- Have your AWTS serviced quarterly (every 3 months) by a qualified service technician
- Learn the location, layout, operational and maintenance requirements of your system
- Ensure that your Council Approval to Operate a sewage management system inspection is not overdue

### Think at the sink

#### ✗ DON'T

- Pour grease, fats or harmful chemicals including bleaches, disinfectants, whiteners and nappy soakers down your sink

#### ✓ DO

- Use water efficiently
- Fix household leaks and consider installing high-efficiency fixtures
- Check household products for suitability for use in septic systems

### Don't put anything funny down your dunny

#### ✗ DON'T

- Allow any foreign materials such as nappies, disposable wipes, sanitary products or any other personal items to be flushed down the toilet

#### ✓ DO

- Dispose of all non-degradable products in the rubbish bin

### Shield your field

#### ✗ DON'T

- Allow vehicles to drive on to or park on your disposal field
- Allow stock to graze on your disposal field
- Allow wastewater to pond or flow onto the grounds surface
- Irrigate any consumable foods with the wastewater

#### ✓ DO

- Ensure your sprinklers (where approved) are moved on a regular basis
- Level any depressions within your disposal area with good quality top soil
- Keep the grass regularly mowed
- Keep animals, children and vehicles away

### Don't strain your drain

#### ✗ DON'T

- Shock load your system by using your dishwasher, shower or bath and washing machine at the same time

#### ✓ DO

- Stagger the use of water generating appliances
- Consider installing water efficient fixtures and fittings



Do Your Part - Be Septic Smart

For more information phone  
Camden Council on 4654 7777