



Local Traffic Committee Business Paper

LATE ITEMS

Committee Meeting
1 February 2022

MS Teams



LATE ITEMS
LOCAL TRAFFIC COMMITTEE

ORDER OF BUSINESS - LOCAL TRAFFIC COMMITTEE

ELECTRONIC MEETING ITEMS

There are no Delegated Items to ratify.

LTC01	Cawdor Road / Mitchell Street / John Street, Camden - Camden Show 2022 - Special Event Transport Management Plan	3
-------	---	---

LOCAL TRAFFIC COMMITTEE

LTC01

**SUBJECT: CAWDOR ROAD / MITCHELL STREET / JOHN STREET, CAMDEN -
CAMDEN SHOW 2022 - SPECIAL EVENT TRANSPORT
MANAGEMENT PLAN**

FROM: Manager Open Space & Sustainability

TRIM #: 22/17547

PURPOSE OF REPORT

To seek Local Traffic Committee concurrence for the proposed traffic management arrangements associated with the Camden Show, to be held on Friday 1st and Saturday 2nd April 2022.

BACKGROUND

The Camden Show Society Inc. has submitted a Special Event Transport Management Plan which provides details of arrangements on how traffic will be managed during the course of the Camden Show in 2022. This includes pedestrian safety barriers and traffic control measures on Cawdor Road and Mitchell Street, Camden, similar to arrangements in recent years. The Show Society is also planning a street parade on Friday afternoon between 4.00pm and 4.30pm, instigating the temporary closure of part of John Street for that period.

MAIN REPORT

The Camden Show is programmed to take place on Friday 1st and Saturday 2nd April 2022 between 6.00am and 11.30pm. The annual event takes place in Onslow Park and the Bicentennial Equestrian Park. It is anticipated the event will attract approximately 40,000 participants and visitors. Off street parking for 1,300 vehicles has been identified within the confines of the event site.

As in previous years, it is proposed to conduct a fireworks display on the Saturday evening from approximately 9.00pm to 9.30pm. As an additional traffic control measure, the applicant has proposed to close John Street between Mitchell Street and Exeter Street. This closure is only required when there is a long queue on John Street. Marshalls will be provided at either end to enable access to the school and church sites. This year, the Show Society is planning a moving street parade from 4.00pm to 4.30pm on Friday 1st April 2022.

The parade will incorporate up to twelve vehicles, some of which will be drawn by oxen and/or horses. The parade procession will be marshalled at the closed section of John Street. The route heads south along John Street, west along Argyle Street to the intersection with Murray Street, around the roundabout heading east back along Argyle Street, left on John Street, then north to finish at the section of closed road. It is proposed that, as in previous years, the event is designated as Class 2.

Traffic Control Plans have been prepared (DWG No. 14056N) (see **Attachment 1**) detailing the following elements:

Access and egress for the event



- Exeter Street (western end) - vehicular access / egress for parking in Onslow Park and Bicentennial Equestrian Park via ticket booths;
- Cawdor Road (western side opposite the Camden RSL Club) – vehicular parking in the Bicentennial Equestrian Park;
- Cawdor Road (eastern side) - 40 metres No Stopping south of the RSL Club exit;
- Mitchell Street (west of intersection with Oxley Street) - pedestrian access egress via turnstiles west of car park; vehicular access/egress for people with disabilities accessed through the barriers at the intersection;
- Argyle Street (opposite the end of Murray Street) - pedestrian access / egress via turnstiles set 12 metres from the footpath to allow for queuing. Limited egress between 5.00 pm and 11.30 pm; and
- Cawdor Road / Onslow Park carpark roundabout - pedestrian egress after 5.00pm.

Cawdor Road / Argyle Street

Traffic control measures proposed for Cawdor Road and Argyle Street are:

- road closure of Onslow Park entrance / exit off the roundabout intersection with Cawdor Road;
- barriers and bollards to close the road and associated "Side Road Closed Ahead" and "Changed Traffic Conditions Ahead" signs;
- reallocation of the unrestricted parallel parking on the northwest side of Cawdor Road from Onslow Park roundabout to Argyle Street to No Parking "Set Down and Pick Up Area";
- reallocation of the unrestricted parallel parking on the southeast side of Cawdor Road from Onslow Park roundabout to Argyle Street to "No Stopping";
- pedestrian barriers to control pedestrian flow in the vicinity of the Cawdor Road/ Argyle Street / Murray Street roundabout;
- reallocation of 40 metres unrestricted parallel parking on the southeast side of Cawdor Road southwest of the exit from the RSL Club to "No Stopping"; and
- 60 metre long physical vehicle barriers to be placed on the footpath along the kerb extension on the western side of Cawdor Road / Argyle Street in the vicinity on the roundabout, throughout the event.

Mitchell Street

Traffic control measures proposed for Mitchell Street are:

- road closure between the intersection with Oxley Street and Onslow Park;
- barriers to close the road and associated "Road Closed" and "Detour" signs;
- reallocation of the angle parking bays on the north side between Oxley Street and John Street to Bus Zone from 8.00 am to 4.00 pm on Friday 1st April 2022 and No Parking "Set Down and Pick Up Area" from 4.00pm on Friday 1st April to 12 midnight on Saturday 2nd April 2022;
- traffic controllers placed at the road closure and the angle parking bays;
- barriers between the Woolworths Carpark in the Oxley/Mitchell Streets Carpark; and
- directional signage indicating parking for people with disabilities.

John Street - Street Parade

Traffic control measures proposed for John Street are:

- road closure between the intersection with Mitchell Street and Exeter Street; barriers to close the road and associated "Road Closed" signs and local access sign;
- u-turn facility and associated No Stopping at the northern end;
- advanced warning signage indicating the closure and location of Camden Show car parking;
- traffic controller placed at the southern end of Mitchell Street to facilitate access to the Camden Uniting Church, Camden Public School and the Retirement Village;
- during the street parade, traffic controllers placed at all the side roads to prevent interference of the parade;
- two vehicles to drive side by side at the rear of the parade to mitigate against hostile vehicle access; and
- by arrangement, NSW Police control of the street parade with Police vehicles at the front and rear of the parade.

Variable Message Signs

Four variable message signs have been proposed for the event:

- Cawdor Road (west side between Sheathers Lane and Barsden Street);
- Argyle Street (south side between Cowpasture Bridge and Rotary Cowpasture Reserve Entrance);
- Macquarie Grove Road (east side between Exeter Street and Camden Airport; and
- Old Hume Highway (west side) between Rosalie Avenue and Kelloway Avenue).

The variable message signs will give prior warning of the Camden Show, parking arrangements and the street parade.

FINANCIAL AND ASSET MANAGEMENT IMPLICATIONS

The Camden Show Society Inc. has paid the Special Event Transport Management Plan application fee.

CONCLUSION

The measures proposed in the Special Event Transport Management Plan, as a Class 2 event, have worked effectively in recent years to safely control pedestrian and vehicle movement during the Camden Show. It is recommended that the event, with these associated measures, is supported subject to the conditions listed below.

RECOMMENDED

The Local Traffic Committee recommends that Council:

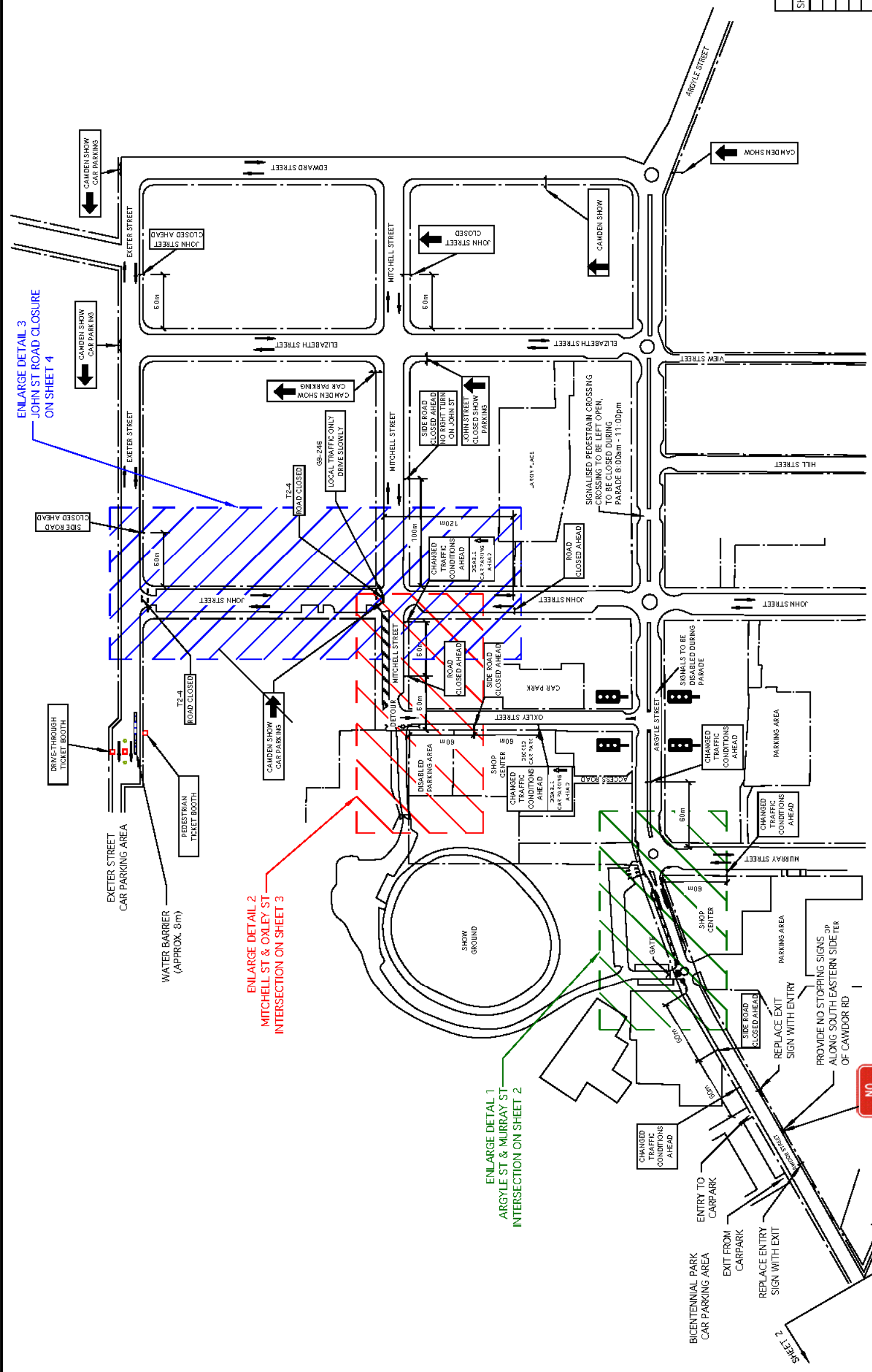
- a) approves the following temporary measures between 5.00am and 12 midnight on Friday 1st April and Saturday 2nd April 2022 as per the Special Event Transport Management Plan and the associated certified Traffic Control Plans (DWG 14056N Sheets 1 to 6) for the Camden Show 2022 and Street Parade:**
 - i. closure of Mitchell Street from Oxley Street to Onslow Park;**

-
- ii. closure of John Street between Exeter Street and Mitchell Street, except for local access;
 - iii. reallocation of the unrestricted angle parking bays on the north side of Mitchell Street between Oxley Street and John Street to Bus Zone (8.00am to 4.00pm on Friday 1st April 2022);
 - iv. reallocation of the unrestricted angle parking bays on the north side of Mitchell Street between Oxley Street and John Street to No Parking (4.00pm on Friday 1st April 2022 to 12 midnight on Saturday 2nd April 2022);
 - v. reallocation of the unrestricted parallel parking on the northwest side of Cawdor Road from Onslow Park roundabout to Argyle Street to No Parking;
 - vi. reallocation of the unrestricted parallel parking on the southeast side of Cawdor Road from Onslow Park roundabout to Argyle Street to "No Stopping";
 - vii. pedestrian barriers around the Cawdor Road / Argyle Street / Murray Street roundabout and vehicle barriers on the western side;
 - viii. reallocation of 40 metres unrestricted parallel parking on the southeast side of Cawdor Road southwest of the exit from the RSL Club to "No Stopping";
 - ix. Variable Message Signs at Cawdor Road between Sheathers Lane and Barsden Street, Argyle Street between Cowpasture Bridge and Rotary Cowpasture Reserve, Macquarie Grove Road between Exeter Street and Camden Airport and Old Hume Highway between Rosalie Avenue and Kelloway Avenue; and
- b) approval is subject to the following conditions:
- i. the event be classified as a Class 2 event under the TfNSW Guide to Traffic and Transport Management for Special Events, Version 3.5;
 - ii. traffic management arrangements be implemented in accordance with the approved Special Event Transport Management Plan and associated certified Traffic Control Plans;
 - iii. access for emergency vehicles be maintained at all times;
 - iv. the organisers obtain NSW Police concurrence to the Special Event approval;
 - v. the organisers provide proof of a minimum \$20 million Public Liability Insurance Policy noting Council as an interested party;
 - vi. temporary signage associated with the Traffic Control Plan be installed and removed at the end of the event at no cost to Council;
 - vii. traffic management arrangements are advertised in local newspapers, and on street signage a minimum of 7 days prior to the event;
 - viii. businesses along the street parade route are notified in writing, a minimum of 7 days prior to the event;
 - ix. emergency services (as advised by Council) and local bus companies are notified of the traffic management arrangements, a minimum of 7 days prior to the event;
 - x. a disestablishment plan for temporary signage is submitted to Council prior to the event start date;
 - xi. Traffic Management Plan to be submitted to RMS for consideration;
 - xii. Hostile vehicle mitigation plan to be approved by the NSW Police; and
 - xiii. the organisers securing any other necessary consents as advised by Council.

ATTACHMENTS

-
1. Attachment 1 - CAMDEN SHOW TMP 2022

NOTE:
PEDESTRIAN BARRIERS TO BE
FIXED TOGETHER WITH CLIPS



ENLARGE DETAIL 3
JOHN ST ROAD CLOSURE
ON SHEET 4

ENLARGE DETAIL 2
MITCHELL ST & OXLEY ST
INTERSECTION ON SHEET 3

ENLARGE DETAIL 1
ARGYLE ST & MURRAY ST
INTERSECTION ON SHEET 2

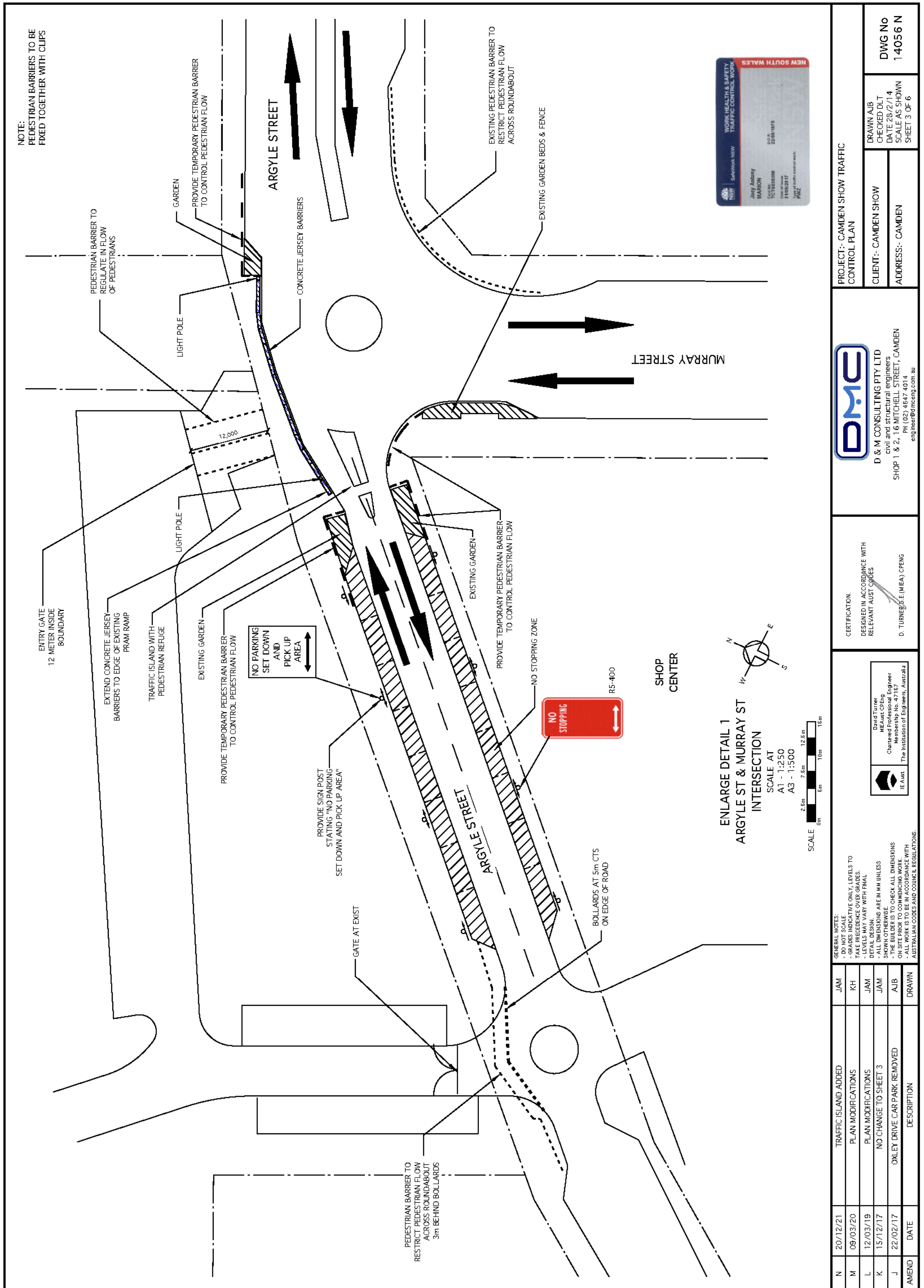
TRAFFIC CONTROL PLAN INDEX	
SHEET NO.	DRAWING TITLE
1 OF 6	OVERALL PLAN
2 OF 6	CAWDOR RD & SHEATHERS LN INTERSECTION
3 OF 6	ARGYLE ST & MURRAY ST INTERSECTION
4 OF 6	MITCHELL ST & OXLEY ST INTERSECTION
5 OF 6	JOHN ST CLOSURE
6 OF 6	FRIDAY STREET PARADE

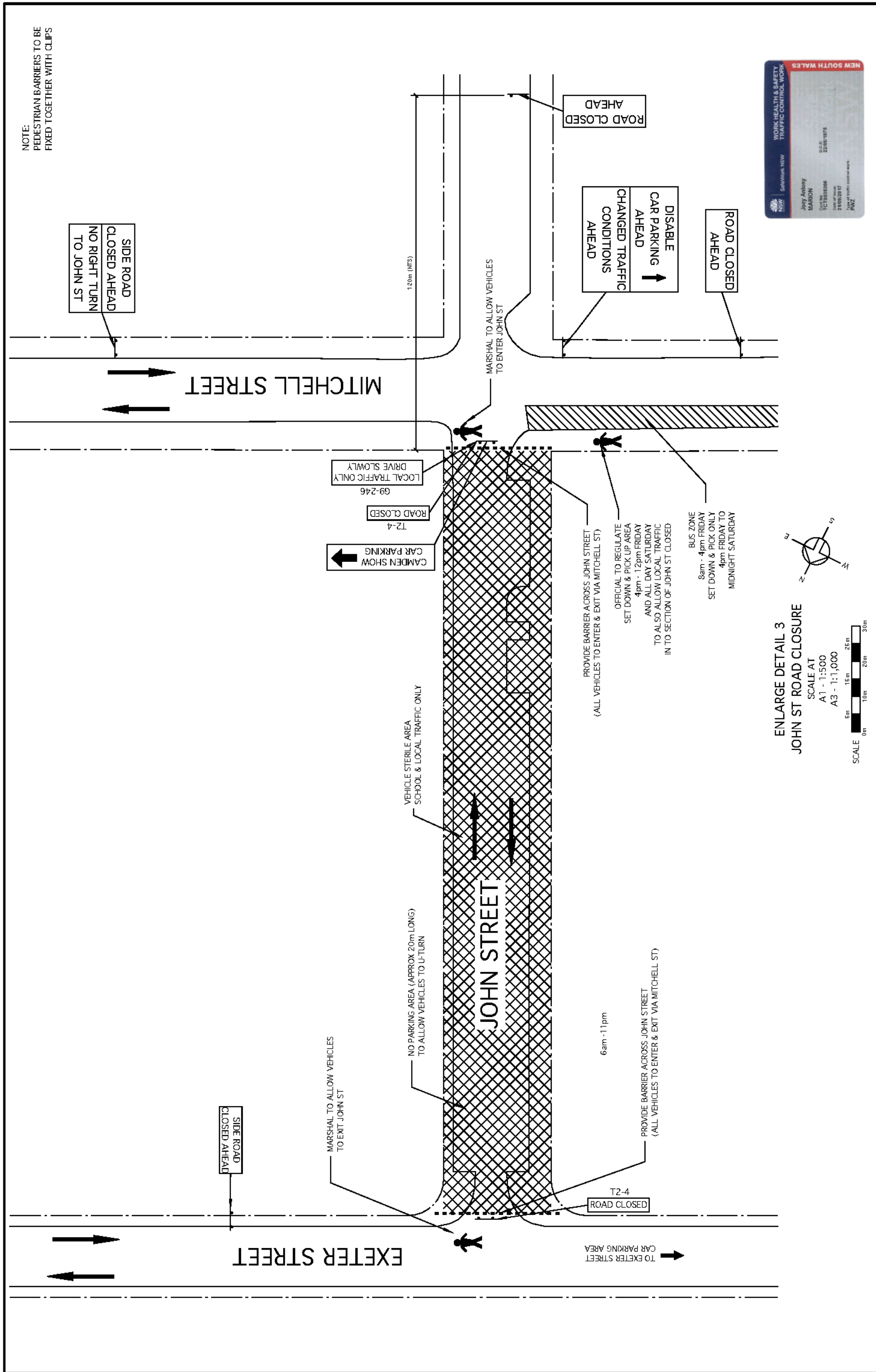


OVERALL PLAN
SCALE AT
A1 - 1:2,000
A3 - 1:4,000

ALL CAR PARKING AREAS TO BE MANAGED BY CAMDEN
SHOW VOLUNTEERS. (i.e. STATE EMERGENCY SERVICE
OR RURAL BUSH FIRE SERVICE)

		PROJECT: CAMDEN SHOW TRAFFIC CONTROL PLAN	
D & M CONSULTING PTY LTD civil and structural engineers SHOP 1 & 2, 16 MITCHELL STREET, CAMDEN PH (02) 4647 4014 <small>anindependentmember.com.au</small>		DRAWN A/B CHECKED DLT DATE 28/2/14 SCALE AS SHOWN SHEET 1 OF 6	
CERTIFICATION: DESIGNED IN ACCORDANCE WITH RELEVANT AUSTRALIAN STANDARDS D. TURNER B.Eng. (M.Eng.) CPEng		DWG No 1 4056 N	
David Turner M.Eng., CPEng Chartered Professional Engineer Membership No. 47167 The Institution of Engineers, Australia		PROJECT: CAMDEN SHOW TRAFFIC CONTROL PLAN	
GENERAL NOTES: - DO NOT SCALE - GRADES INDICATIVE ONLY, LEVELS TO TAKE PRECEDENCE OVER GRADES - LEVELS MAY VARY WITH FINAL DETAIL DESIGN - DIMENSIONS ARE IN MM UNLESS SHOWN OTHERWISE - THE BUILDER IS TO CHECK ALL DIMENSIONS ON SITE PRIOR TO COMMENCING WORK - ALL WORK IS TO BE IN ACCORDANCE WITH APPLICABLE CODES AND CURRENT REGULATIONS		AMEND DATE DESCRIPTION N 20/12/21 TRAFFIC CARD UPDATED M 09/03/20 PLAN MODIFICATIONS L 12/03/19 PLAN MODIFICATIONS K 22/12/17 SIGNALISED PEDESTRIAN CROSSING ADDED J 22/02/17 OXLEY DRIVE CAR PARK REMOVED	





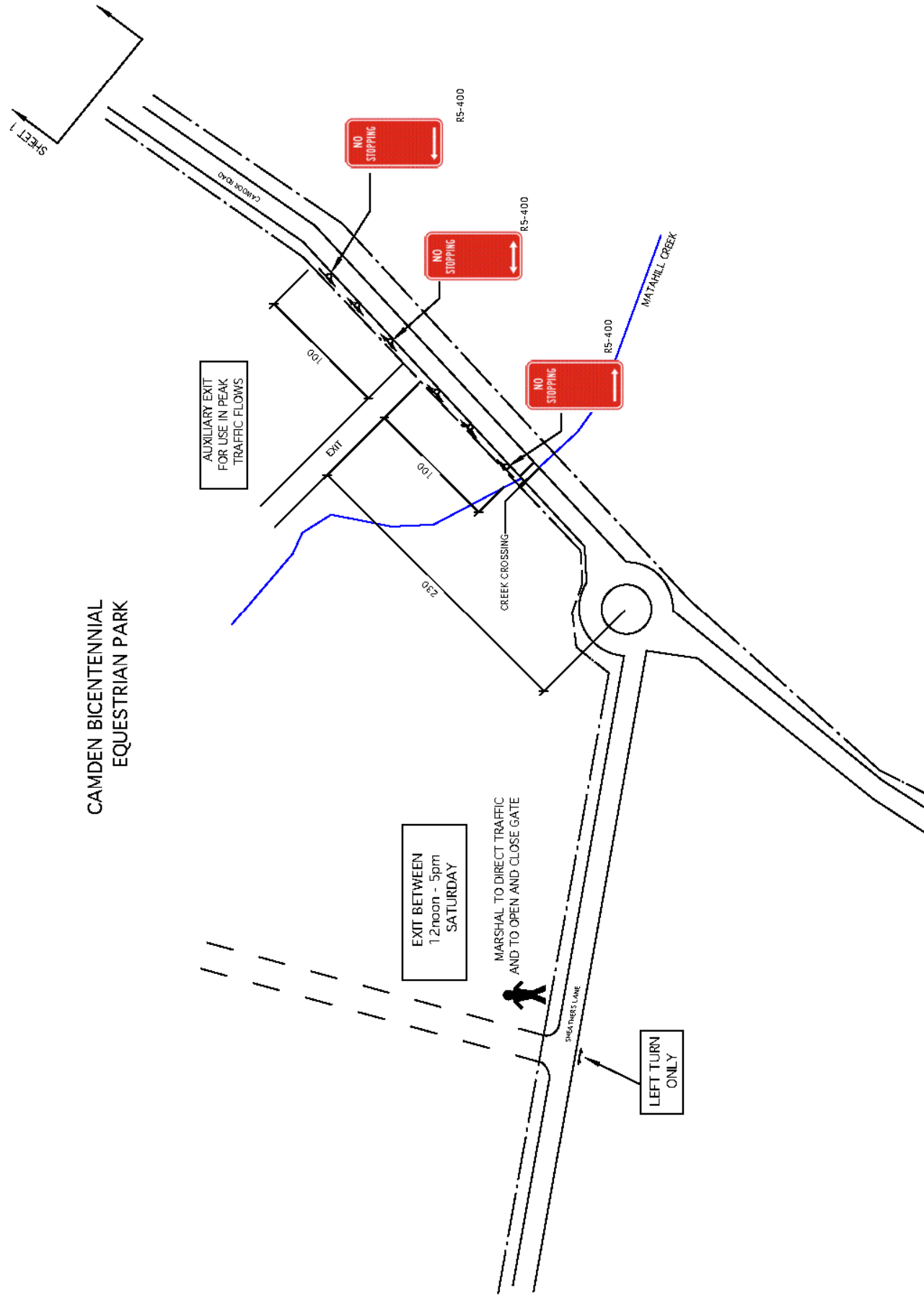
AMEND	DATE	DESCRIPTION	DRAWN
N	20/12/21	NEW KERB RETURNS ADDED	JAM
M	09/03/20	NO CHANGE TO SHEET 5	KH
L	12/03/19	PLAN MODIFICATIONS	JAM
K	15/12/17	NO CHANGE TO SHEET 5	JAM
J	22/02/17	OXLEY DRIVE CAR PARK REMOVED	AJB

D & M CONSULTING PTY LTD
civil and structural engineers
SHOP 1 & 2, 16 MITCHELL STREET, CAMDEN
PH (02) 4647 4014
engineer@dmceing.com.au

DMC

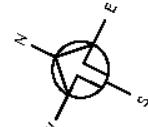
Attachment 1

LTC01



CAWDOR ROAD AND SHEATHERS LANE INTERSECTION

SCALE AT
 A1 - 1:2000
 A3 - 1:4000



AMEND	DATE	DESCRIPTION	JAM	TRAFFIC CARD UPDATED
N	20/12/21		JAM	
M	09/03/20	NO CHANGE TO SHEET 2	KH	
L	12/03/19	PLAN MODIFICATIONS	JAM	
K	15/12/17	NO CHANGE TO SHEET 2	JAM	
J	22/02/17	OXLEY DRIVE CAR PARK REMOVED	AJB	
			DRAWN	

GENERAL NOTES: - DO NOT SCALE - GRADES INDICATIVE ONLY, LEVELS TO TAKE PRECEDENCE OVER GRADES. - LEVELS MAY VARY WITH FINAL DETAIL DESIGN. - ALL DIMENSIONS ARE IN MM UNLESS SHOWN OTHERWISE. - THE BUILDER IS TO CHECK ALL DIMENSIONS ON SITE PRIOR TO COMMENCING WORK. - ALL WORK IS TO BE IN ACCORDANCE WITH AUSTRALIAN CODES AND COUNCIL REGULATIONS.	
CERTIFICATION: DESIGNED IN ACCORDANCE WITH RELEVANT AUSTRALIAN STANDARDS D. TURNER (E. (MEA) CPENG)	
D & M CONSULTING PTY LTD civil and structural engineers SHOP 1 & 2, 16 MITCHELL STREET, CAMDEN PH (02) 4647 4014 engineers@dmcseng.com.au	
PROJECT:- CAMDEN SHOW TRAFFIC CONTROL PLAN CLIENT:- CAMDEN SHOW ADDRESS:- CAMDEN	
DRAWN AJB CHECKED DLT DATE 28/2/14 SCALE A3 SHOWN SHEET 2 OF 6	
DWG No 1-4056 N	

