

Drawing a Country Cottage Workshop



Lets learn to draw this early Australian Country Cottage



Our homes are all different shapes and sizes, you can follow along through our workshop to discover how to use basic shading and drawing skills to capture and draw this cottage and then explore drawing your own.

What you need!

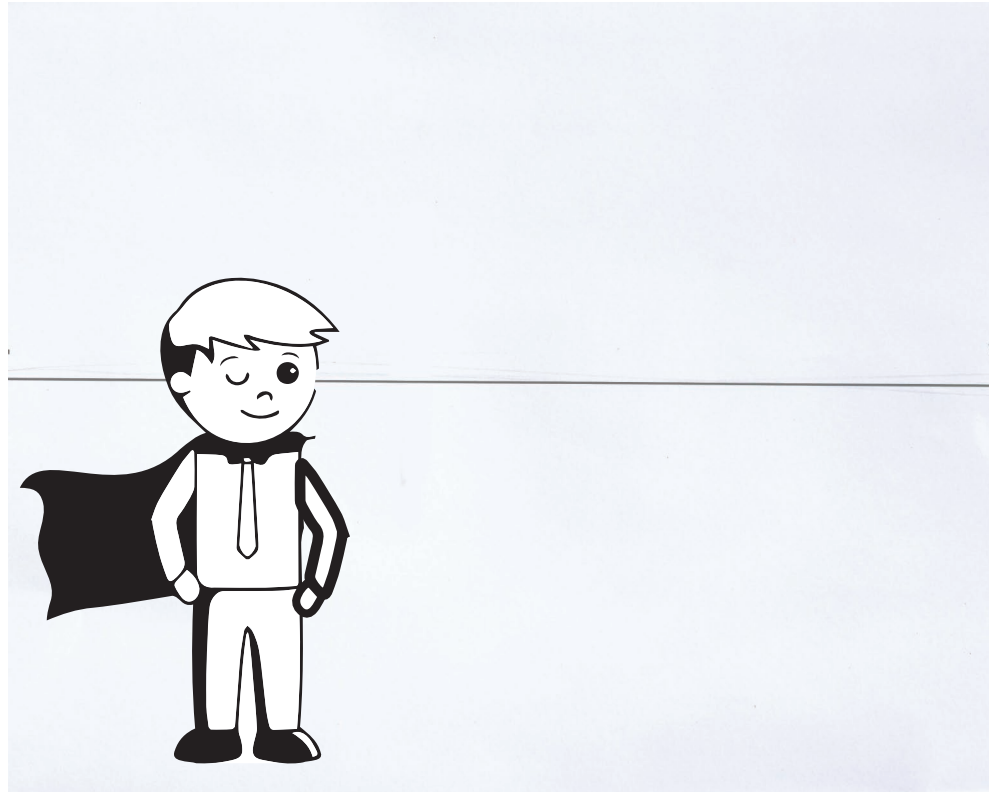
1 An A4 piece of paper and a HB lead pencil



1

Eye Line

- Draw a horizontal straight line very lightly across the center of the page.
- This is your eye line level, it is an imaginary line level with the horizon in the distance.



2

Edge of the house

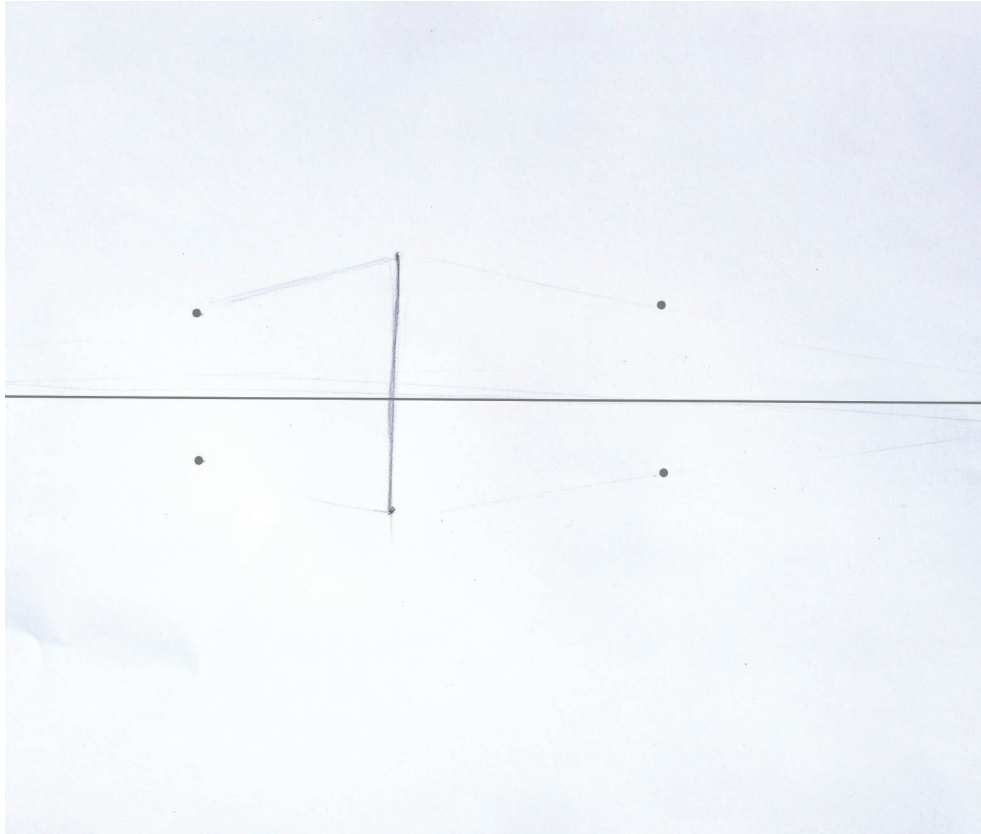
- Let's draw the corner of the cottage closest to you. The corner you will draw is the point where both sides of the house join together, it is the corner that looks the closest to you.



3

Connecting the dots

- Draw dots on the paper to mark where the walls finish, include top and bottom. Notice they are not as tall as your first line because they are further away.

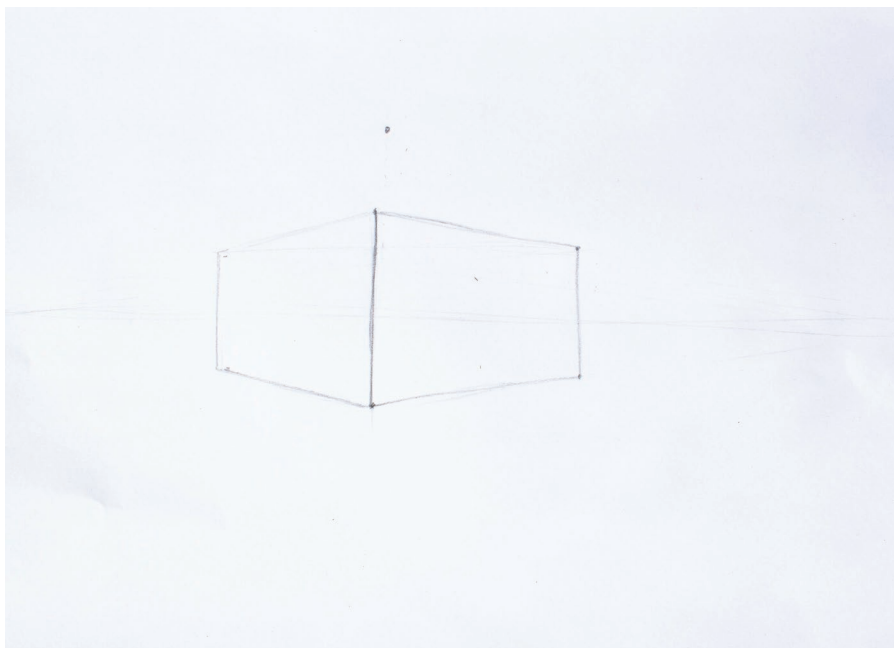


4

Base of house

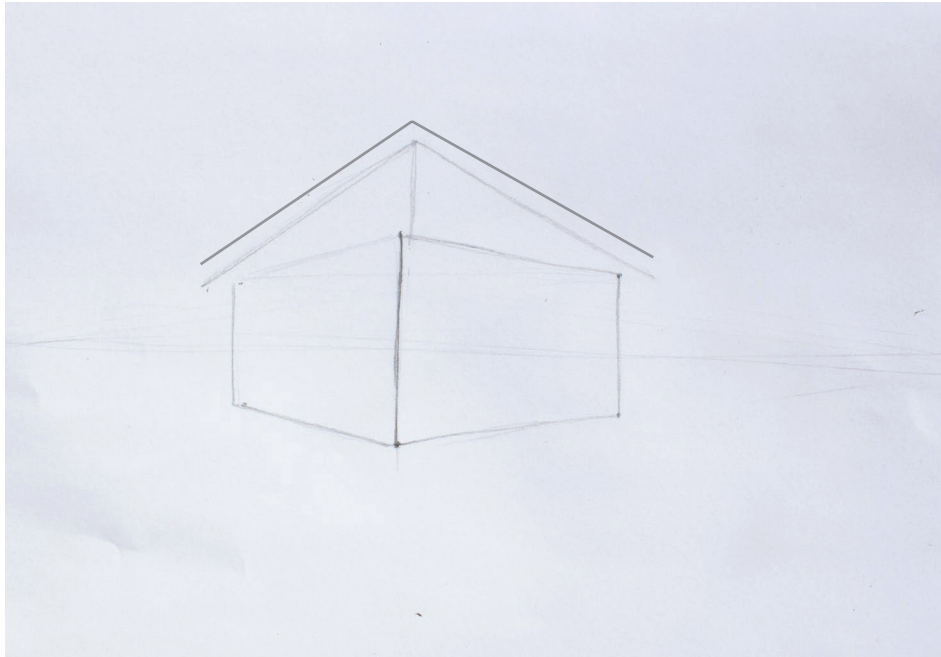
- Use the center line and draw a line from dot to the dot, connecting the dots to create the edge of the house, this will give us our cube shape.

- This will be our building block for the rest of the sketch.



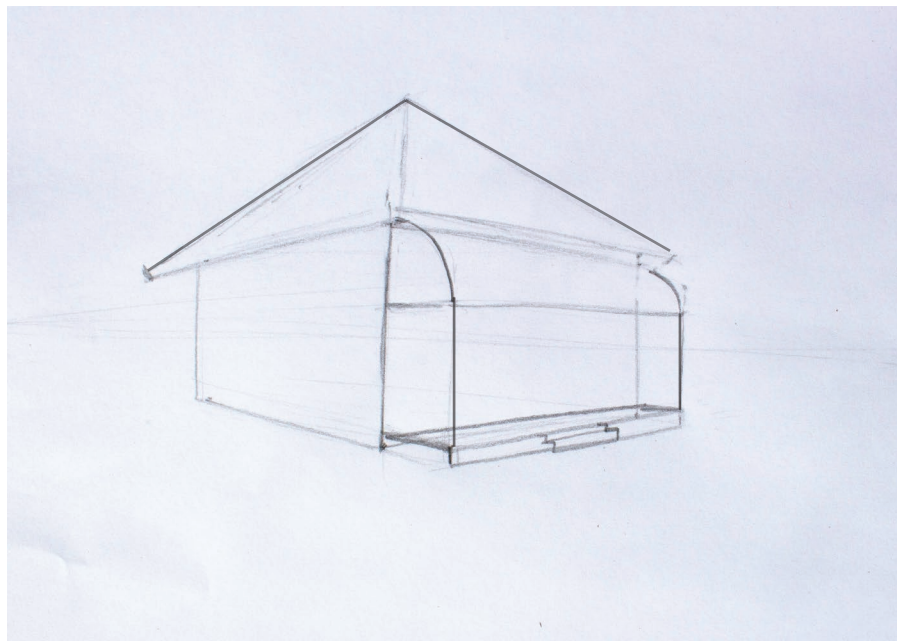
5 Rooftop

- Using triangular shapes sketch the roof on top of the house.
- You will notice the roof is wider than the house, extend the roof slightly to include the gutters, gutters are important because they collect rain water.



6 Veranda and covering

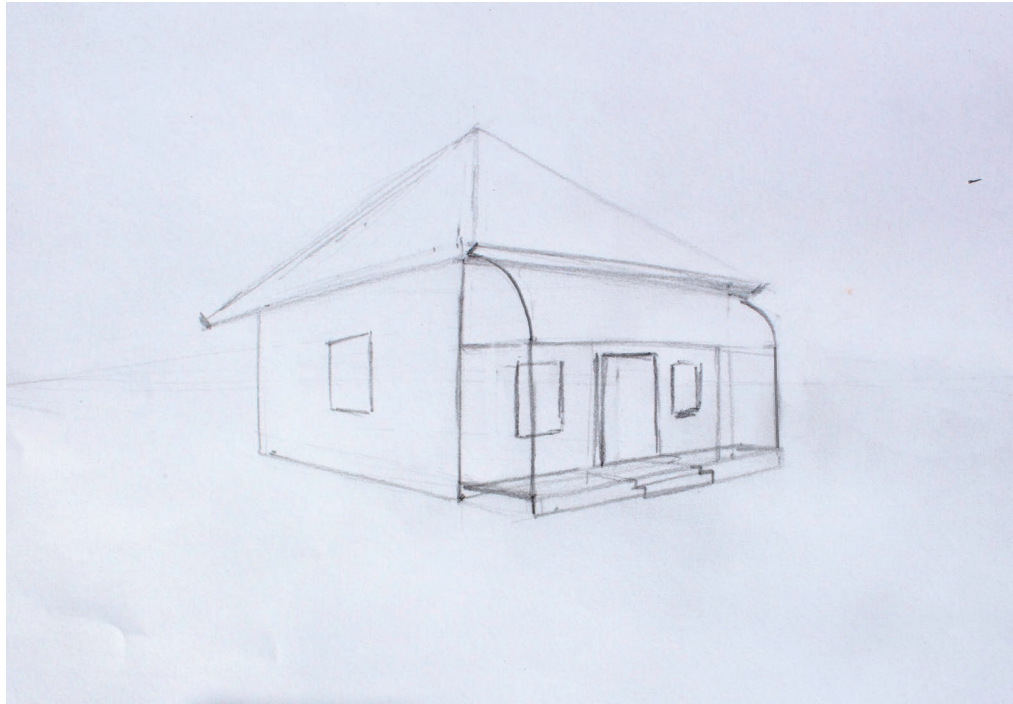
- Now we can add a veranda, the veranda includes the front steps, the ground and cover that make up the veranda. Try and use simple shapes to create the veranda. Breaking it down will make it easier to sketch.



7

Windows and doors

- Add in the windows and doors using rectangular shapes, you can add to the front and side walls.



8

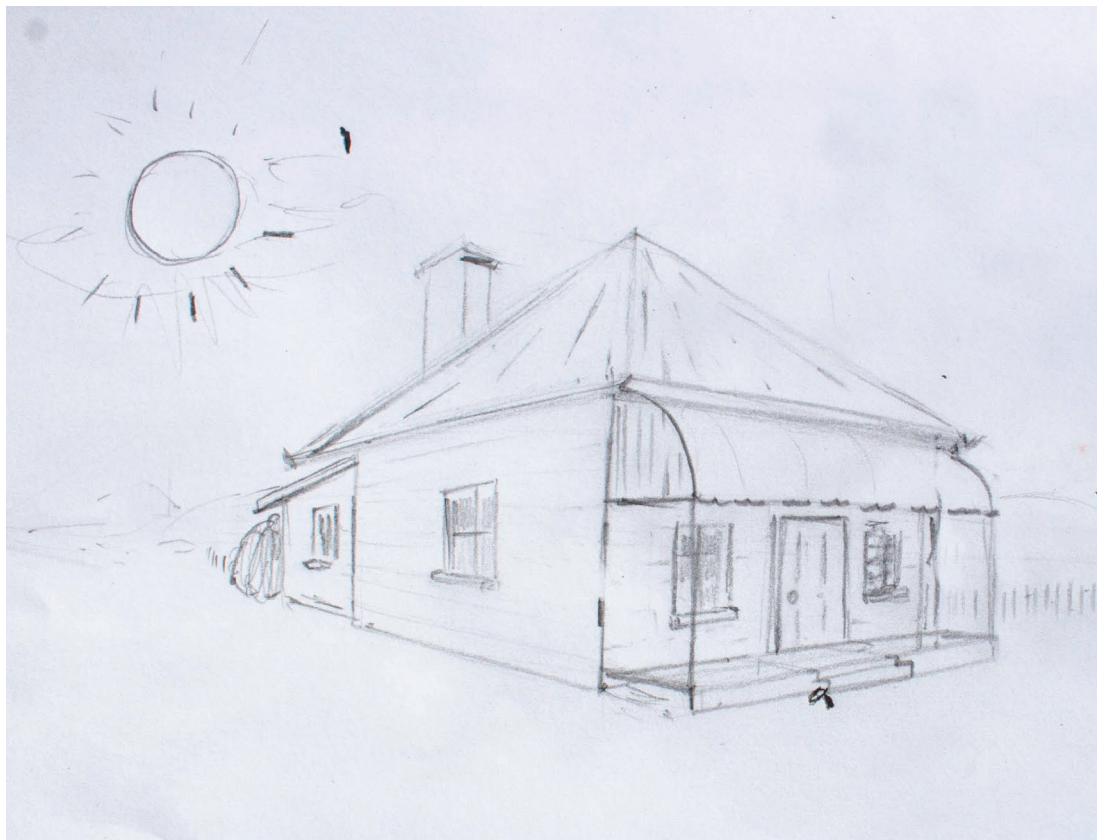
Basic texture and other elements

- Following the picture, you can sketch in the back kitchen and chimney.
- Think about what the building is built out of, there is an iron roof, wooden boards on the walls and the chimney is brick.
- Experiment with different drawing techniques to show these different materials in your picture. For example the wooden boards are shown by lines. Be creative with your design.



9 Shadows, light and dark shading

- Our natural daylight comes from the sun, as the sunlight meets with our cottage it causes shadows. Placing the sun in the sky will help us with the direction of the shadows.
- Remember we can shade with the side of our pencils and by pressing harder we can achieve darker tones.
- Practice your shading by drawing three boxes and shade them in. When you use a lot of pressure it is dark, with very little pressure it is very light.
- This will help us when we start to shade the shadows and add texture to our drawing



10

Shading

- Go ahead, give it a try, shade the dark and light sections of the house. Have you noticed that your drawing is starting to look more 3D.



11

Finishing

- Add in the final details of the house and surroundings. Draw the landscape including the grass, fences, and distant hills.
- Well done, show your artwork to your friends and family.



Now you can get out and about and recreate your home or homes in your community



ALAN BAKER
ART GALLERY