

CONNECT WITH NATURE

FROG JACUZZI & HOTEL



Native gardens provide food and shelter for local wildlife. By carefully choosing plants and incorporating habitat features, you can create a garden that attracts native animals such as birds, butterflies, frogs or mammals.

Creating even a small habitat garden can help our native wildlife, by creating stepping stones within the landscape which link patches of bushland with surrounding areas.

Many native species are also beneficial to have in your garden! So why not invite wildlife into your life!

Frogs are lovely creatures to have in your garden and can help reduce the number of mosquitoes and garden pests.

Use this plan to create a frog-friendly garden and build a Frog Jacuzzi or Frog Hotel, to attract these beneficial creatures to your garden.



Photo by Kerrie Lee



Photo by Yanik Armstrong



PENRITH
CITY COUNCIL

Connect with Nature is a partnership between Camden and Penrith City Councils.

FROG JACUZZI

A frog jacuzzi or pond is a great feature to include in your garden as it will not only look fantastic, but also attract beneficial native frogs to your garden.

How do I create a frog jacuzzi?

Step 1

Collect all the materials you will need to create a frog jacuzzi:

- Pond (prefabricated pond mould from a garden store, old tub or bathtub or UV-resistant plastic pond liner laid over a hole dug in your garden);
- Pebbles and gravel of different sizes;
- Large rocks to line the perimeter of the pond;
- Aquatic native plants; and
- Log to semi-submerge from the garden into the pond.



1

Step 2

Select the location for the frog jacuzzi.

This could be in your front or back garden depending on your available space. This location needs to be somewhere that receives shade for at least 50 per cent of the day to create ideal conditions for tadpoles and frogs and will mean the water won't get too hot or cold.

Too much sunlight could also result in an algae problem.

Step 3

Dig a hole to fit your pond. The top of the pond should be almost level with the ground but sit a little higher, to prevent runoff from the surrounding garden getting in there.



3

Step 4

Add the large rocks around the perimeter of the pond. These not only look great, but also provide additional habitat for frogs.

Step 5

Add the pebbles and gravel at the bottom of the pond. Ensure these are different sizes to mimic what is found in a natural waterbody. The nooks and crannies created by the different sized pebbles also create space for the tadpoles to hide from predators such as birds.

Not all frogs are good climbers, so try to incorporate gentle slopes in your pond or include semi-submerged rocks or logs to allow frogs to climb in and out of the water. This will mean that any birds or other animals that may get stuck in the pond, can easily get out.



5

Step 6

Fill the pond with water.

Caution: make sure your frog jacuzzi is safe for children. You could consider putting a mesh cover over the top or fencing it off to keep your kids safe around the water. If your pond has a depth of 300mm or greater then you will be required to install a pool fence.

*



6

Step 7

Add aquatic native plants to your pond such as Bladderwort (*Utricularia spp.*) which is a carnivorous plant (the “mosquito muncher”) that sucks up mosquito larvae but leaves the tadpoles alone.

You could also include Hairy Nardoo (*Marsilea Drummondii*), reeds and rushes in your pond.

Local native nurseries will be able to give you advice on which aquatic plants are suitable that are non-invasive.

*



7

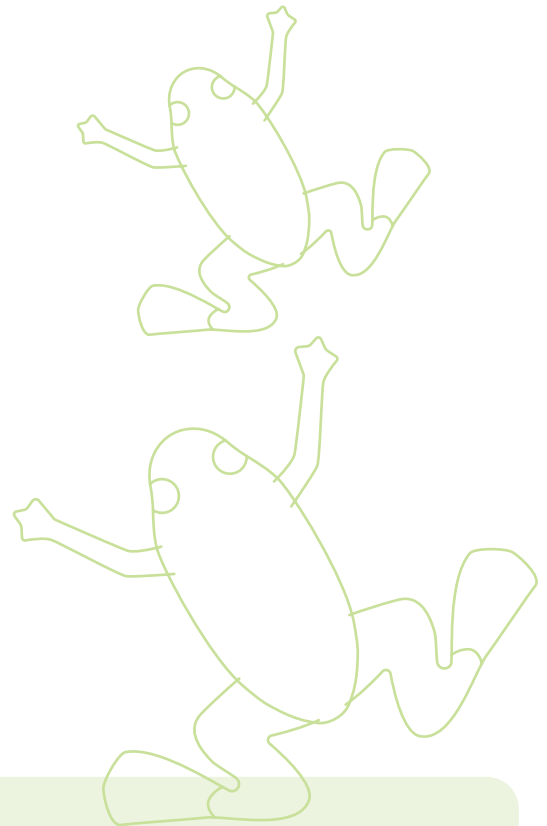
Step 8

Now you’ve created a jacuzzi fit for any frog, how do you get the frogs there? You need be patient and also ensure you maintain the pond, so your habitat garden has everything the frog needs:

- Healthy clean water;
- Plants to provide shelter; and
- Areas for the frogs to climb up out of the pond.

Other things to consider in your frog-friendly habitat garden:

- Don’t put fish in the pond, as this will deter native frogs from using the space as habitat.
- Frogs are very sensitive to herbicides, insecticides, fertilisers and many other commonly used garden chemicals. To keep frogs in your garden, stop using them and look for more natural alternatives that won’t harm a frog’s delicate skin.



Here’s a tip!

Fallen timber or tree limbs are also a great idea to incorporate in your frog pond and this will create a ‘lizard lounge’. Blue tongues, skinks and water dragons will love it and it will provide a space for them to sun themselves.

FROG HOTEL

If space in your garden is limited, you could consider building a frog hotel to provide habitat for native frogs without taking up too much room.

A frog hotel also requires less maintenance than the frog jacuzzi.

How do I create a frog hotel?

Step 1

Collect all the materials you will need to create a frog hotel:

- Pot or watertight container;
- Bamboo or PVC pipe of varying lengths and widths;
- Pebbles and stones;
- Native plant (which tolerates wet roots); and
- Potting mix.

Step 2

Fill the base of the pot or container with the pebbles and stones.



Step 3

Place the native plant on top of the pebble base and then arrange the bamboo or tubes around the plant.



Step 4

Backfill with potting mix to cover the plant and help hold the bamboo or tubes in place. Then cover the soil with pebbles or stones.



Step 5

Place the frog hotel in location in your garden that receives shade for at least 50 per cent of the day.

Sit back and wait for your frog friends to move in!



*Photos by Hooked on Nature.

